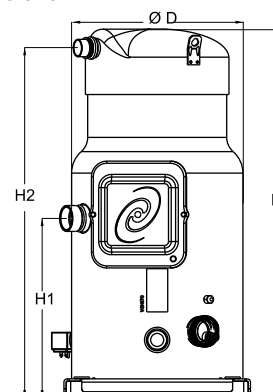


General Characteristics

Model number (on compressor nameplate)		VZH170AGANB
Code number for Singlepack*		120G0018
Code number for Industrial pack**		120G0086
Drawing number		8551186a
Suction and discharge connections		Brazed
Suction connection		1-5/8" ODF
Discharge connection		1-1/8" ODF
Oil sight glass		Threaded
Oil equalisation connection		2-1/4" Rotolock
Oil drain connection		None
LP gauge port		Schrader
IPR valve		None
Swept volume		170.2 cm ³ /rev
Net weight		112 kg
Oil charge		6.7 litre, POE - 160SZ
Maximum system test pressure Low Side / High side		30.2 bar(g) / 45 bar(g)
Maximum differential test pressure		37 bar
Maximum number of starts per hour		12
Refrigerant charge limit		13.5 kg
Approved refrigerants		R410A

Dimensions

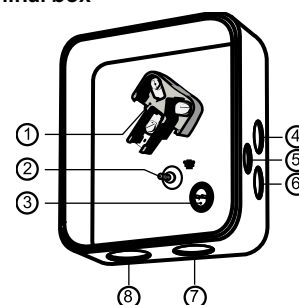


D=318 mm
H=686.5 mm
H1=329 mm
H2=644.5 mm
H3=- mm

Electrical Characteristics

Nominal voltage	Frequency converter CDS303 required with supply voltage 380-480V/3/50-60Hz
Voltage range	342-528 V supply to frequency converter
Winding resistance (between phases) +/- 7% at 25°C	0.05 Ω
Rated Load Amps (RLA)	61 A
Maximum Must Trip current (MMT)	76.3 A
Motor protection	Motor protection by frequency converter

Terminal box



IP54 (with cable gland)

- 1: Power connection, 3 x 4.8 mm (3/16")
- 2: Earth M5
- 3: Thermostat connector
- 4: Knock-out Ø 22 mm (7/8") for 1/2" conduit
- 5: Knock-out Ø 16.5 mm (0.65")
- 6: Knock-out Ø 20.5 mm (0.81")
- 7: Double knock-out Ø 32.1 mm (1.26") & Ø 25.4 mm (1")
- 8: Double knock-out Ø 44 mm (1-3/4") for 1-1/4" conduit & Ø 34 mm (1-3/8") for 1" conduit

Recommended Installation torques

Oil sight glass	60 Nm
Power connections / Earth connection	3 Nm / 2 Nm
Mounting bolts	21 Nm

Parts shipped with compressor

Mounting kit with grommets and sleeves
Initial oil charge
Installation instructions

Approvals : CE certified, UL certified (file SA6873), -

*Singlepack: Compressor in cardboard box

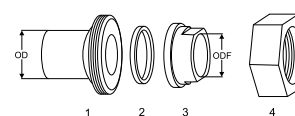
**Industrial pack: 4 Unboxed compressors on pallet (order per multiples of 4)

Rotolock accessories, suction side
Code no.

Solder sleeve, P03 (2-1/4" Rotolock, 1-5/8" ODF)	8153006
Rotolock valve, V03 (2-1/4" Rotolock, 1-5/8" ODF)	8168026
Rotolock adapter (2"1/4 Rotolock, 1"5/8 ODF)	120Z0432
Gasket, 2-1/4"	8156133

Rotolock accessories, discharge side
Code no.

Solder sleeve, P02 (1-3/4" Rotolock, 1-1/8" ODF)	8153004
Angle adapter, C02 (1-3/4" Rotolock, 1-1/8" ODF)	8168005
Rotolock valve, V02 (1-3/4" Rotolock, 1-1/8" ODF)	8168028
Rotolock adapter (1-3/4" Rotolock, 1-1/8" ODF)	120Z0364
Gasket, 1-3/4"	8156132

Solder sleeve adapter set


- 1: Rotolock adapter (Suc & Dis)
- 2: Gasket (Suc & Dis)
- 3: Solder sleeve (Suc & Dis)
- 4: Rotolock nut (Suc & Dis)

Rotolock accessories, sets
Code no.

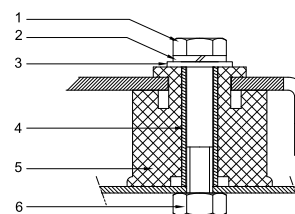
Solder sleeve adapter set, (2-1/4" Rotolock, 1-5/8" ODF), (1-3/4" Rotolock, 1"1/8 ODF)	7765028
Valve set, V03 (2-1/4"~1-5/8"), V02 (1-3/4"~1-1/8")	7703383
Gasket set, 1-1/4", 1-3/4", 2-1/4", OSG gaskets black & white	8156013

Oil / lubricants
Code no.

POE lubricant, 160SZ, 1 litre can	7754023
POE lubricant, 160SZ, 2.5 litre can	120Z0571

Mounting kit
Crankcase heaters
Code no.

Surface sump heater + bottom insulation, 56 W, 24 V, CE mark, UL	120Z0360
Surface sump heater + bottom insulation, 56 W, 230 V, CE mark, UL	120Z0376
Surface sump heater + bottom insulation, 56 W, 400 V, CE mark, UL	120Z0377
Surface sump heater + bottom insulation, 56 W, 460 V, CE mark, UL	120Z0378
Surface sump heater + bottom insulation, 56 W, 575 V, CE mark, UL	120Z0379
Belt type crankcase heater, 75 W, 110 V, CE mark, UL	7773110
Belt type crankcase heater, 75 W, 230 V, CE mark, UL	7773108
Belt type crankcase heater, 75 W, 400 V, CE mark, UL	7773118



- 1: Bolt (4x)
- 2: Lock washer (4x)
- 3: Flat washer (4x)
- 4: Sleeve (4x)
- 5: Grommet (4x)
- 6: Nut (4x)

Miscellaneous accessories
Code no.

Discharge temperature sensor / converter	120Z0157
Discharge temperature sensor	120Z0158
Discharge temperature converter	120Z0159
Acoustic hood for VZH	120Z0517
Discharge thermostat kit	7750009

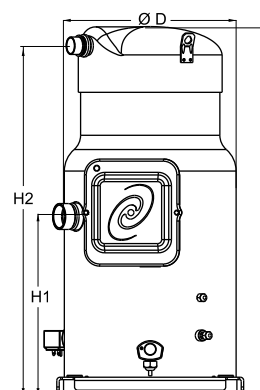
Spare parts
Code no.

Mounting kit for 1 scroll compressor including 4 grommets, 4 sleeves, 4 bolts, 4 washers	8156138
Oil sight glass with gaskets (black & white)	8156019
Gasket for oil sight glass (white teflon)	8156129
Terminal box incl cover	120Z0538
Terminal box cover	120Z0537
T block connector 60 x 75 mm	8173021
Coil / 230V	120Z0143
Coil / 24V	120Z0144

General Characteristics

Model number (on compressor nameplate)		VZH170AGBNB
Code number for Singlepack*		120G0030
Code number for Industrial pack**		120G0098
Drawing number		8551187a
Suction and discharge connections		Brazed
Suction connection		1-5/8" ODF
Discharge connection		1-1/8" ODF
Oil sight glass		None
Oil equalisation connection		2-1/4" Rotolock
Oil drain connection		None
LP gauge port		Schrader
IPR valve		None
Swept volume		170.2 cm ³ /rev
Net weight		112 kg
Oil charge		6.7 litre, POE - 160SZ
Maximum system test pressure Low Side / High side		30.2 bar(g) / 45 bar(g)
Maximum differential test pressure		37 bar
Maximum number of starts per hour		12
Refrigerant charge limit		13.5 kg
Approved refrigerants		R410A

Dimensions

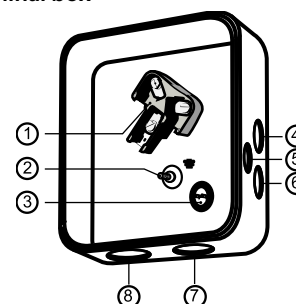


D=318 mm
H=686.5 mm
H1=329 mm
H2=644.5 mm
H3=- mm

Electrical Characteristics

Nominal voltage	Frequency converter CDS303 required with supply voltage 380-480V/3/50-60Hz
Voltage range	342-528 V supply to frequency converter
Winding resistance (between phases) +/- 7% at 25°C	0.05 Ω
Rated Load Amps (RLA)	61 A
Maximum Must Trip current (MMT)	76.3 A
Motor protection	Motor protection by frequency converter

Terminal box



- IP54 (with cable gland)
- 1: Power connection, 3 x 4.8 mm (3/16")
 - 2: Earth M5
 - 3: Thermostat connector
 - 4: Knock-out Ø 22 mm (7/8") for 1/2" conduit
 - 5: Knock-out Ø 16.5 mm (0.65")
 - 6: Knock-out Ø 20.5 mm (0.81")
 - 7: Double knock-out Ø 32.1 mm (1.26") & Ø 25.4 mm (1")
 - 8: Double knock-out Ø 44 mm (1-3/4") for 1-1/4" conduit & Ø 34 mm (1-3/8") for 1" conduit

Recommended Installation torques

Power connections / Earth connection	3 Nm / 2 Nm
Mounting bolts	21 Nm

Parts shipped with compressor

Mounting kit with grommets and sleeves
Initial oil charge
Installation instructions

Approvals : CE certified, UL certified (file SA6873), -

*Singlepack: Compressor in cardboard box

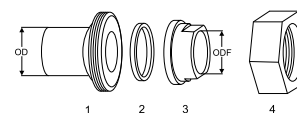
**Industrial pack: 4 Unboxed compressors on pallet (order per multiples of 4)

Rotolock accessories, suction side
Code no.

Solder sleeve, P03 (2-1/4" Rotolock, 1-5/8" ODF)	8153006
Rotolock valve, V03 (2-1/4" Rotolock, 1-5/8" ODF)	8168026
Rotolock adapter (2"1/4 Rotolock, 1"5/8 ODF)	12020432
Gasket, 2-1/4"	8156133

Rotolock accessories, discharge side
Code no.

Solder sleeve, P02 (1-3/4" Rotolock, 1-1/8" ODF)	8153004
Angle adapter, C02 (1-3/4" Rotolock, 1-1/8" ODF)	8168005
Rotolock valve, V02 (1-3/4" Rotolock, 1-1/8" ODF)	8168028
Rotolock adapter (1-3/4" Rotolock, 1-1/8" ODF)	12020364
Gasket, 1-3/4"	8156132

Solder sleeve adapter set


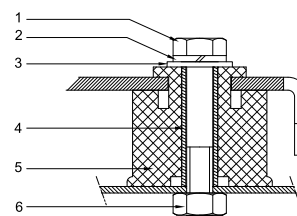
- 1: Rotolock adapter (Suc & Dis)
- 2: Gasket (Suc & Dis)
- 3: Solder sleeve (Suc & Dis)
- 4: Rotolock nut (Suc & Dis)

Rotolock accessories, sets
Code no.

Solder sleeve adapter set, (2-1/4" Rotolock, 1-5/8" ODF), (1-3/4" Rotolock, 1"1/8 ODF)	7765028
Valve set, V03 (2-1/4"~1-5/8"), V02 (1-3/4"~1-1/8")	7703383
Gasket set, 1-1/4", 1-3/4", 2-1/4", OSG gaskets black & white	8156013

Oil / lubricants
Code no.

POE lubricant, 160SZ, 1 litre can	7754023
POE lubricant, 160SZ, 2.5 litre can	12020571

Mounting kit


- 1: Bolt (4x)
- 2: Lock washer (4x)
- 3: Flat washer (4x)
- 4: Sleeve (4x)
- 5: Grommet (4x)
- 6: Nut (4x)

Crankcase heaters
Code no.

Surface sump heater + bottom insulation, 56 W, 24 V, CE mark, UL	12020360
Surface sump heater + bottom insulation, 56 W, 230 V, CE mark, UL	12020376
Surface sump heater + bottom insulation, 56 W, 400 V, CE mark, UL	12020377
Surface sump heater + bottom insulation, 56 W, 460 V, CE mark, UL	12020378
Surface sump heater + bottom insulation, 56 W, 575 V, CE mark, UL	12020379
Belt type crankcase heater, 75 W, 110 V, CE mark, UL	7773110
Belt type crankcase heater, 75 W, 230 V, CE mark, UL	7773108
Belt type crankcase heater, 75 W, 400 V, CE mark, UL	7773118

Miscellaneous accessories
Code no.

Discharge temperature sensor / converter	12020157
Discharge temperature sensor	12020158
Discharge temperature converter	12020159
Acoustic hood for scroll compressor VZH	12020518
Discharge thermostat kit	7750009
Hybrid Manifolding Kit for VZH170+SH180 VZH170+SH240 VZH170+SH295 24V	12020649
Hybrid Manifolding Kit for VZH170+SH184 24V	12020682
Hybrid Manifolding Kit for VZH170+SH180 VZH170+SH240 VZH170+SH295 230V	12020650
Hybrid Manifolding kit for VZH170+SH184 230V	12020681
Hybrid Manifolding Kit for VZH170+SH240 230V	12020600
Suction separator for VZH170+SH180 (50-60Hz)(left-right) VZH170+SH184 (60Hz)(left) VZH170+SH240 (50-60Hz)(right-left)	12020657
Suction separator for VZH170+SH184 (50-60Hz) (Left)	12020683
Suction separator for VZH170+SH184 (50-60Hz) (Right)	12020687
Suction separator for VZH170+SH295 (50-60Hz)	12020655
Oil level sensor electrical part 24VAC/VDC	12020561
Oil level sensor electrical part 230VAC	12020562

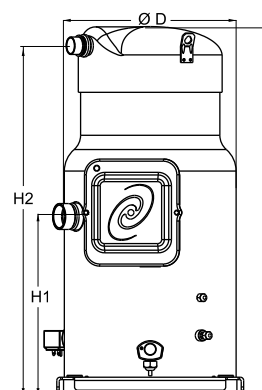
Spare parts
Code no.

Mounting kit for 1 scroll compressor including 4 grommets, 4 sleeves, 4 bolts, 4 washers	8156138
Mounting for 1 scroll compressor including 4 triangle rigid spacer, 4 sleeves, 4 bolts, 4 washers	12020495
Gasket for oil sight glass (white teflon)	8156129
Terminal box incl cover	12020538
Terminal box cover	12020537
T block connector 60 x 75 mm	8173021
Coil / 230V	12020143
Coil / 24V	12020144

General Characteristics

Model number (on compressor nameplate)		VZH170AGDNB
Code number for Singlepack*		120G0114
Drawing number		8560095b
Suction and discharge connections		Brazed
Suction connection		1-5/8" ODF
Discharge connection		1-1/8" ODF
Oil sight glass		Installed on OEQ
Oil equalisation connection		2-1/4" Rotolock
Oil drain connection		None
LP gauge port		Schrader
IPR valve		None
Swept volume		170.2 cm ³ /rev
Net weight		112 kg
Oil charge		7.7 litre, POE - 160SZ
Maximum system test pressure Low Side / High side		30.2 bar(g) / 45 bar(g)
Maximum differential test pressure		37 bar
Maximum number of starts per hour		12
Refrigerant charge limit		13.5 kg
Approved refrigerants		R410A

Dimensions

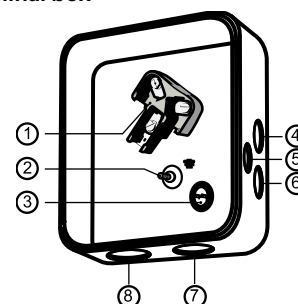


D=318 mm
H=686.5 mm
H1=329 mm
H2=644.5 mm
H3=- mm

Electrical Characteristics

Nominal voltage	Frequency converter CDS303 required with supply voltage 380-480V/3/50-60Hz
Voltage range	342-528 V supply to frequency converter
Winding resistance (between phases) +/- 7% at 25°C	0.05 Ω
Rated Load Amps (RLA)	61 A
Maximum Must Trip current (MMT)	76.3 A
Motor protection	Motor protection by frequency converter

Terminal box



- IP54 (with cable gland)
- 1: Power connection, 3 x 4.8 mm (3/16")
 - 2: Earth M5
 - 3: Thermostat connector
 - 4: Knock-out Ø 22 mm (7/8") for 1/2" conduit
 - 5: Knock-out Ø 16.5 mm (0.65")
 - 6: Knock-out Ø 20.5 mm (0.81")
 - 7: Double knock-out Ø 32.1 mm (1.26") & Ø 25.4 mm (1")
 - 8: Double knock-out Ø 44 mm (1-3/4") for 1-1/4" conduit & Ø 34 mm (1-3/8") for 1" conduit

Recommended Installation torques

Power connections / Earth connection	3 Nm / 2 Nm
Mounting bolts	21 Nm

Parts shipped with compressor

Mounting kit with grommets and sleeves
Initial oil charge
Installation instructions

Approvals : CE certified, UL certified (file SA6873), -

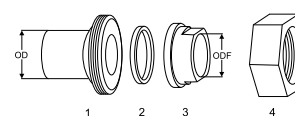
*Singlepack: Compressor in cardboard box

Rotolock accessories, suction side
Code no.

Solder sleeve, P03 (2-1/4" Rotolock, 1-5/8" ODF)	8153006
Rotolock valve, V03 (2-1/4" Rotolock, 1-5/8" ODF)	8168026
Rotolock adapter (2"1/4 Rotolock, 1"5/8 ODF)	12020432
Gasket, 2-1/4"	8156133

Rotolock accessories, discharge side
Code no.

Solder sleeve, P02 (1-3/4" Rotolock, 1-1/8" ODF)	8153004
Angle adapter, C02 (1-3/4" Rotolock, 1-1/8" ODF)	8168005
Rotolock valve, V02 (1-3/4" Rotolock, 1-1/8" ODF)	8168028
Rotolock adapter (1-3/4" Rotolock, 1-1/8" ODF)	12020364
Gasket, 1-3/4"	8156132

Solder sleeve adapter set


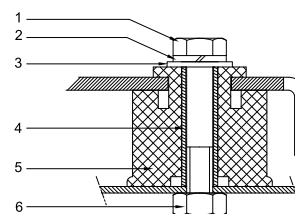
- 1: Rotolock adapter (Suc & Dis)
- 2: Gasket (Suc & Dis)
- 3: Solder sleeve (Suc & Dis)
- 4: Rotolock nut (Suc & Dis)

Rotolock accessories, sets
Code no.

Solder sleeve adapter set, (2-1/4" Rotolock, 1-5/8" ODF), (1-3/4" Rotolock, 1"1/8 ODF)	7765028
Valve set, V03 (2-1/4"~1-5/8"), V02 (1-3/4"~1-1/8")	7703383
Gasket set, 1-1/4", 1-3/4", 2-1/4", OSG gaskets black & white	8156013

Oil / lubricants
Code no.

POE lubricant, 160SZ, 1 litre can	7754023
POE lubricant, 160SZ, 2.5 litre can	12020571

Mounting kit


- 1: Bolt (4x)
- 2: Lock washer (4x)
- 3: Flat washer (4x)
- 4: Sleeve (4x)
- 5: Grommet (4x)
- 6: Nut (4x)

Crankcase heaters
Code no.

Surface sump heater + bottom insulation, 56 W, 24 V, CE mark, UL	12020360
Surface sump heater + bottom insulation, 56 W, 230 V, CE mark, UL	12020376
Surface sump heater + bottom insulation, 56 W, 400 V, CE mark, UL	12020377
Surface sump heater + bottom insulation, 56 W, 460 V, CE mark, UL	12020378
Surface sump heater + bottom insulation, 56 W, 575 V, CE mark, UL	12020379
Belt type crankcase heater, 75 W, 110 V, CE mark, UL	7773110
Belt type crankcase heater, 75 W, 230 V, CE mark, UL	7773108
Belt type crankcase heater, 75 W, 400 V, CE mark, UL	7773118

Miscellaneous accessories
Code no.

Discharge temperature sensor / converter	12020157
Discharge temperature sensor	12020158
Discharge temperature converter	12020159
Acoustic hood for scroll compressor VZH	12020518
Discharge thermostat kit	7750009
Hybrid Manifolding Kit for VZH170+SH180 VZH170+SH240 VZH170+SH295 24V	12020649
Hybrid Manifolding Kit for VZH170+SH184 24V	12020682
Hybrid Manifolding Kit for VZH170+SH180 VZH170+SH240 VZH170+SH295 230V	12020650
Hybrid Manifolding kit for VZH170+SH184 230V	12020681
Hybrid Manifolding Kit for VZH170+SH240 230V	12020600
Suction separator for VZH170+SH180 (50-60Hz)(left-right) VZH170+SH184 (60Hz)(left) VZH170+SH240 (50-60Hz)(right-left)	12020657
Suction separator for VZH170+SH184 (50Hz) (Left)	12020683
Suction separator for VZH170+SH184 (50-60Hz) (Right)	12020687
Suction separator for VZH170+SH295 (50-60Hz)	12020655
Oil level sensor electrical part 24VAC/VDC	12020561
Oil level sensor electrical part 230VAC	12020562

Spare parts
Code no.

Mounting kit for 1 scroll compressor including 4 grommets, 4 sleeves, 4 bolts, 4 washers	8156138
Mounting for 1 scroll compressor including 4 triangle rigid spacer, 4 sleeves, 4 bolts, 4 washers	12020495
Gasket for oil sight glass (white teflon)	8156129
Terminal box incl cover	12020538
Terminal box cover	12020537
T block connector 60 x 75 mm	8173021
Coil / 230V	12020143
Coil / 24V	12020144
Oil level sensor screw in mechanical part	12020560

Performance data at 25 Hz, EN 12900 rating conditions
R410A

Cond. temp. in °C (tc)	Evaporating temperature in °C (to)							
	-20	-15	-10	-5	0	5	10	15

Cooling capacity in W

20	-	11 172	13 580	16 431	19 768	23 633	28 069	-	-
25	-	10 537	12 901	15 685	18 930	22 680	26 978	31 866	-
30	-	9 883	12 185	14 882	18 017	21 633	25 774	30 481	35 798
40	-	8 505	10 627	13 095	15 955	19 247	23 016	27 305	32 156
45	-	-	9 778	12 105	14 798	17 901	21 456	25 507	30 097
50	-	-	-	11 046	13 554	16 448	19 772	23 566	27 876
55	-	-	-	-	12 219	14 886	17 959	21 479	25 490
60	-	-	-	-	-	-	-	19 241	22 935

Power input in W

20	-	3 095	3 074	3 047	2 982	2 844	2 601	-	-
25	-	3 527	3 498	3 488	3 465	3 395	3 245	2 980	-
30	-	4 019	3 962	3 949	3 948	3 925	3 847	3 680	3 391
40	-	5 287	5 112	5 032	5 013	5 023	5 029	4 996	4 891
45	-	-	5 848	5 703	5 646	5 642	5 658	5 661	5 618
50	-	-	-	6 495	6 378	6 339	6 346	6 366	6 363
55	-	-	-	-	7 235	7 142	7 119	7 134	7 152
60	-	-	-	-	-	-	-	7 990	8 009

Current consumption in A

20	-	6.31	5.90	5.69	5.68	5.87	6.25	-	-
25	-	7.32	6.94	6.70	6.62	6.70	6.93	7.33	-
30	-	8.27	7.91	7.66	7.52	7.50	7.59	7.80	8.13
40	-	10.20	9.93	9.67	9.45	9.25	9.09	8.95	8.85
45	-	-	11.10	10.86	10.60	10.33	10.05	9.76	9.46
50	-	-	-	12.25	11.97	11.63	11.25	10.81	10.32
55	-	-	-	-	13.61	13.22	12.74	12.16	11.49
60	-	-	-	-	-	-	-	13.88	13.03

Mass flow in kg/h

20	-	208	252	302	359	425	500	-	-
25	-	206	250	301	359	425	501	587	-
30	-	203	248	299	357	424	500	586	684
40	-	195	240	291	350	417	494	580	678
45	-	-	234	286	344	411	488	574	672
50	-	-	-	279	337	404	480	566	663
55	-	-	-	-	328	395	470	556	653
60	-	-	-	-	-	-	-	544	641

Coefficient of performance (C.O.P.)

20	-	3.61	4.42	5.39	6.63	8.31	10.79	-	-
25	-	2.99	3.69	4.50	5.46	6.68	8.31	10.69	-
30	-	2.46	3.08	3.77	4.56	5.51	6.70	8.28	10.56
40	-	1.61	2.08	2.60	3.18	3.83	4.58	5.47	6.57
45	-	-	1.67	2.12	2.62	3.17	3.79	4.51	5.36
50	-	-	-	1.70	2.13	2.59	3.12	3.70	4.38
55	-	-	-	-	1.69	2.08	2.52	3.01	3.56
60	-	-	-	-	-	-	-	2.41	2.86

Nominal performance at to = 5 °C, tc = 50 °C

Cooling capacity	19 772	W
Power input	6 346	W
Current consumption	11.25	A
Mass flow	480	kg/h
C.O.P.	3.12	

Pressure switch settings

Maximum HP switch setting	45	bar(g)
Minimum LP switch setting	1.5	bar(g)
LP pump down setting	2.3	bar(g)

Sound power data

Sound power level		dB(A)
With acoustic hood		dB(A)

to: Evaporating temperature at dew point

tc: Condensing temperature at dew point

Rating conditions : Superheat = 10 K , Subcooling = 0 K

Tolerance according EN12900

Danfoss can accept no responsibility for possible errors in catalogues, brochures and other printed material. Danfoss reserves the right to alter its products without notice. This also applies to products already on order provided that such alternations can be made without subsequential changes being necessary in specifications already agreed. All trademarks in this material are property of the respective companies. Danfoss and the Danfoss logotype are trademarks of Danfoss A/S. All rights reserved.

Performance data at 25 Hz, ARI rating conditions

R410A

Cond. temp. in °C (tc)	Evaporating temperature in °C (to)							
	-20	-15	-10	-5	0	5	10	15

Cooling capacity in W

20	-	11 932	14 492	17 521	21 063	25 163	29 866	-	-
25	-	11 306	13 831	16 800	20 259	24 254	28 828	34 028	-
30	-	10 661	13 132	16 023	19 381	23 251	27 679	32 708	38 386
40	-	9 304	11 610	14 290	17 390	20 957	25 035	29 672	34 913
45	-	-	10 782	13 329	16 273	19 661	23 539	27 953	32 950
50	-	-	-	12 303	15 074	18 266	21 928	26 104	30 843
55	-	-	-	-	13 797	16 779	20 210	24 136	28 606
60	-	-	-	-	-	-	-	22 080	26 276

Power input in W

20	-	3 095	3 074	3 047	2 982	2 844	2 601	-	-
25	-	3 527	3 498	3 488	3 465	3 395	3 245	2 980	-
30	-	4 019	3 962	3 949	3 948	3 925	3 847	3 680	3 391
40	-	5 287	5 112	5 032	5 013	5 023	5 029	4 996	4 891
45	-	-	5 848	5 703	5 646	5 642	5 658	5 661	5 618
50	-	-	-	6 495	6 378	6 339	6 346	6 366	6 363
55	-	-	-	-	7 235	7 142	7 119	7 134	7 152
60	-	-	-	-	-	-	-	7 990	8 009

Current consumption in A

20	-	6.31	5.90	5.69	5.68	5.87	6.25	-	-
25	-	7.32	6.94	6.70	6.62	6.70	6.93	7.33	-
30	-	8.27	7.91	7.66	7.52	7.50	7.59	7.80	8.13
40	-	10.20	9.93	9.67	9.45	9.25	9.09	8.95	8.85
45	-	-	11.10	10.86	10.60	10.33	10.05	9.76	9.46
50	-	-	-	12.25	11.97	11.63	11.25	10.81	10.32
55	-	-	-	-	13.61	13.22	12.74	12.16	11.49
60	-	-	-	-	-	-	-	13.88	13.03

Mass flow in kg/h

20	-	207	250	300	357	422	497	-	-
25	-	205	249	299	357	422	497	583	-
30	-	202	246	297	355	421	497	582	679
40	-	194	239	290	348	414	490	576	673
45	-	-	233	284	342	409	484	570	667
50	-	-	-	277	335	401	477	562	658
55	-	-	-	-	326	392	467	552	648
60	-	-	-	-	-	-	-	540	636

Coefficient of performance (C.O.P.)

20	-	3.86	4.71	5.75	7.06	8.85	11.48	-	-
25	-	3.21	3.95	4.82	5.85	7.14	8.89	11.42	-
30	-	2.65	3.31	4.06	4.91	5.92	7.19	8.89	11.32
40	-	1.76	2.27	2.84	3.47	4.17	4.98	5.94	7.14
45	-	-	1.84	2.34	2.88	3.48	4.16	4.94	5.87
50	-	-	-	1.89	2.36	2.88	3.46	4.10	4.85
55	-	-	-	-	1.91	2.35	2.84	3.38	4.00
60	-	-	-	-	-	-	-	2.76	3.28

Nominal performance at to = 7.2 °C, tc = 54.4 °C

Cooling capacity	22 098	W
Power input	7 026	W
Current consumption	12.30	A
Mass flow	504	kg/h
C.O.P.	3.15	

Pressure switch settings

Maximum HP switch setting	45	bar(g)
Minimum LP switch setting	1.5	bar(g)
LP pump down setting	2.3	bar(g)

Sound power data

Sound power level		dB(A)
With acoustic hood		dB(A)

to: Evaporating temperature at dew point

tc: Condensing temperature at dew point

Rating conditions : Superheat = 11.1 K , Subcooling = 8.3 K

Tolerance according EN12900

Danfoss can accept no responsibility for possible errors in catalogues, brochures and other printed material. Danfoss reserves the right to alter its products without notice. This also applies to products already on order provided that such alternations can be made without subsequential changes being necessary in specifications already agreed. All trademarks in this material are property of the respective companies. Danfoss and the Danfoss logotype are trademarks of Danfoss A/S. All rights reserved.

Performance data at 30 Hz, EN 12900 rating conditions

R410A

Cond. temp. in °C (tc)	Evaporating temperature in °C (to)							
	-25	-20	-15	-10	-5	0	5	10

Cooling capacity in W

20	11 200	13 545	16 378	19 754	23 727	28 352	33 684	-	-
30	9 780	12 058	14 767	17 962	21 695	26 023	31 001	36 681	43 120
40	-	10 507	12 998	15 917	19 317	23 254	27 782	32 956	38 830
50	-	-	-	13 568	16 541	19 993	23 978	28 551	33 766
55	-	-	-	-	14 988	18 162	21 840	26 077	30 928
60	-	-	-	-	-	16 188	19 536	23 415	27 878
65	-	-	-	-	-	-	17 061	20 556	24 608
68	-	-	-	-	-	-	-	-	-

Power input in W

20	3 744	3 719	3 718	3 707	3 650	3 514	3 262	-	-
30	4 887	4 769	4 730	4 734	4 745	4 730	4 651	4 476	4 168
40	-	6 203	6 043	5 979	5 975	5 998	6 011	5 980	5 869
50	-	-	-	7 626	7 525	7 503	7 525	7 555	7 559
55	-	-	-	-	8 478	8 402	8 397	8 428	8 458
60	-	-	-	-	-	9 431	9 378	9 387	9 424
65	-	-	-	-	-	-	10 490	10 458	10 479
68	-	-	-	-	-	-	-	-	-

Current consumption in A

20	9.29	9.16	9.13	9.18	9.31	9.51	9.78	-	-
30	9.79	9.58	9.44	9.35	9.32	9.34	9.41	9.51	9.66
40	-	11.33	11.09	10.88	10.70	10.55	10.42	10.30	10.20
50	-	-	-	13.66	13.35	13.04	12.73	12.41	12.07
55	-	-	-	-	15.13	14.74	14.34	13.92	13.48
60	-	-	-	-	-	16.73	16.25	15.74	15.18
65	-	-	-	-	-	-	18.44	17.83	17.18
68	-	-	-	-	-	-	-	-	-

Mass flow in kg/h

20	206	251	302	362	430	509	599	-	-
30	202	248	300	361	430	510	602	706	824
40	-	241	294	354	424	504	596	700	818
50	-	-	-	342	411	491	582	686	803
55	-	-	-	-	403	481	572	675	792
60	-	-	-	-	-	470	560	662	778
65	-	-	-	-	-	-	546	647	762
68	-	-	-	-	-	-	-	-	-

Coefficient of performance (C.O.P.)

20	2.99	3.64	4.41	5.33	6.50	8.07	10.33	-	-
30	2.00	2.53	3.12	3.79	4.57	5.50	6.66	8.19	10.34
40	-	1.69	2.15	2.66	3.23	3.88	4.62	5.51	6.62
50	-	-	-	1.78	2.20	2.66	3.19	3.78	4.47
55	-	-	-	-	1.77	2.16	2.60	3.09	3.66
60	-	-	-	-	-	1.72	2.08	2.49	2.96
65	-	-	-	-	-	-	1.63	1.97	2.35
68	-	-	-	-	-	-	-	-	-

Nominal performance at to = 5 °C, tc = 50 °C

Cooling capacity	23 978	W
Power input	7 525	W
Current consumption	12.73	A
Mass flow	582	kg/h
C.O.P.	3.19	

Pressure switch settings

Maximum HP switch setting	45	bar(g)
Minimum LP switch setting	1.5	bar(g)
LP pump down setting	2.3	bar(g)

Sound power data

Sound power level	72	dB(A)
With acoustic hood	65	dB(A)

to: Evaporating temperature at dew point

tc: Condensing temperature at dew point

Rating conditions : Superheat = 10 K, Subcooling = 0 K

Tolerance according EN12900

Danfoss can accept no responsibility for possible errors in catalogues, brochures and other printed material. Danfoss reserves the right to alter its products without notice. This also applies to products already on order provided that such alternations can be made without subsequential changes being necessary in specifications already agreed. All trademarks in this material are property of the respective companies. Danfoss and the Danfoss logotype are trademarks of Danfoss A/S. All rights reserved.

Performance data at 30 Hz, ARI rating conditions

R410A

Cond. temp. in °C (tc)	Evaporating temperature in °C (to)							
	-25	-20	-15	-10	-5	0	5	10

Cooling capacity in W

20	11 972	14 466	17 478	21 064	25 281	30 188	35 841	-	-
30	10 562	13 009	15 915	19 339	23 338	27 970	33 292	39 362	46 237
40	-	11 495	14 201	17 369	21 056	25 320	30 219	35 813	42 159
50	-	-	-	15 113	18 396	22 202	26 593	31 625	37 360
55	-	-	-	-	16 923	20 471	24 578	29 304	34 709
60	-	-	-	-	-	18 648	22 460	26 869	31 938
65	-	-	-	-	-	-	20 322	24 426	29 176
68	-	-	-	-	-	-	-	-	-

Power input in W

20	3 744	3 719	3 718	3 707	3 650	3 514	3 262	-	-
30	4 887	4 769	4 730	4 734	4 745	4 730	4 651	4 476	4 168
40	-	6 203	6 043	5 979	5 975	5 998	6 011	5 980	5 869
50	-	-	-	7 626	7 525	7 503	7 525	7 555	7 559
55	-	-	-	-	8 478	8 402	8 397	8 428	8 458
60	-	-	-	-	-	9 431	9 378	9 387	9 424
65	-	-	-	-	-	-	10 490	10 458	10 479
68	-	-	-	-	-	-	-	-	-

Current consumption in A

20	9.29	9.16	9.13	9.18	9.31	9.51	9.78	-	-
30	9.79	9.58	9.44	9.35	9.32	9.34	9.41	9.51	9.66
40	-	11.33	11.09	10.88	10.70	10.55	10.42	10.30	10.20
50	-	-	-	13.66	13.35	13.04	12.73	12.41	12.07
55	-	-	-	-	15.13	14.74	14.34	13.92	13.48
60	-	-	-	-	-	16.73	16.25	15.74	15.18
65	-	-	-	-	-	-	18.44	17.83	17.18
68	-	-	-	-	-	-	-	-	-

Mass flow in kg/h

20	205	249	301	360	428	506	595	-	-
30	200	246	298	359	428	507	598	701	817
40	-	239	292	352	421	501	592	695	812
50	-	-	-	340	409	488	578	681	797
55	-	-	-	-	400	478	568	670	786
60	-	-	-	-	-	467	556	657	772
65	-	-	-	-	-	-	542	642	756
68	-	-	-	-	-	-	-	-	-

Coefficient of performance (C.O.P.)

20	3.20	3.89	4.70	5.68	6.93	8.59	10.99	-	-
30	2.16	2.73	3.36	4.09	4.92	5.91	7.16	8.79	11.09
40	-	1.85	2.35	2.91	3.52	4.22	5.03	5.99	7.18
50	-	-	-	1.98	2.44	2.96	3.53	4.19	4.94
55	-	-	-	-	2.00	2.44	2.93	3.48	4.10
60	-	-	-	-	-	1.98	2.39	2.86	3.39
65	-	-	-	-	-	-	1.94	2.34	2.78
68	-	-	-	-	-	-	-	-	-

Nominal performance at to = 7.2 °C, tc = 54.4 °C

Cooling capacity	26 842	W
Power input	8 299	W
Current consumption	13.96	A
Mass flow	613	kg/h
C.O.P.	3.23	

Pressure switch settings

Maximum HP switch setting	45	bar(g)
Minimum LP switch setting	1.5	bar(g)
LP pump down setting	2.3	bar(g)

Sound power data

Sound power level	72	dB(A)
With acoustic hood	65	dB(A)

to: Evaporating temperature at dew point

tc: Condensing temperature at dew point

Rating conditions : Superheat = 11.1 K , Subcooling = 8.3 K

Tolerance according EN12900

Danfoss can accept no responsibility for possible errors in catalogues, brochures and other printed material. Danfoss reserves the right to alter its products without notice. This also applies to products already on order provided that such alternations can be made without subsequential changes being necessary in specifications already agreed. All trademarks in this material are property of the respective companies. Danfoss and the Danfoss logotype are trademarks of Danfoss A/S. All rights reserved.

Performance data at 35 Hz, EN 12900 rating conditions
R410A

Cond. temp. in °C (tc)	Evaporating temperature in °C (to)							
	-25	-20	-15	-10	-5	0	5	10

Cooling capacity in W

20	13 212	15 902	19 169	23 078	27 695	33 086	39 317	-	-
30	11 594	14 209	17 332	21 029	25 366	30 409	36 223	42 875	50 430
40	-	12 481	15 350	18 724	22 669	27 253	32 539	38 594	45 485
50	-	-	-	16 079	19 522	23 535	28 182	33 530	39 645
55	-	-	-	-	17 754	21 440	25 726	30 679	36 364
60	-	-	-	-	-	19 173	23 071	27 600	32 828
65	-	-	-	-	-	-	20 206	24 285	29 028
68	-	-	-	-	-	-	-	-	-

Power input in W

20	4 350	4 350	4 373	4 381	4 341	4 215	3 968	-	-
30	5 623	5 529	5 511	5 534	5 562	5 559	5 489	5 317	5 007
40	-	7 127	6 987	6 942	6 956	6 993	7 018	6 995	6 888
50	-	-	-	8 777	8 694	8 690	8 727	8 770	8 784
55	-	-	-	-	9 746	9 690	9 702	9 748	9 791
60	-	-	-	-	-	10 820	10 787	10 814	10 867
65	-	-	-	-	-	-	12 002	11 991	12 032
68	-	-	-	-	-	-	-	-	-

Current consumption in A

20	11.52	11.82	12.11	12.40	12.65	12.88	13.07	-	-
30	10.87	10.90	10.95	11.01	11.08	11.14	11.19	11.21	11.21
40	-	12.49	12.29	12.13	12.00	11.89	11.80	11.70	11.61
50	-	-	-	15.13	14.80	14.52	14.27	14.06	13.87
55	-	-	-	-	16.71	16.34	16.02	15.75	15.50
60	-	-	-	-	-	18.40	18.00	17.66	17.37
65	-	-	-	-	-	-	20.14	19.74	19.40
68	-	-	-	-	-	-	-	-	-

Mass flow in kg/h

20	242	293	353	422	502	594	699	-	-
30	239	292	352	422	503	596	703	825	963
40	-	286	347	417	498	591	698	820	959
50	-	-	-	406	485	578	684	805	943
55	-	-	-	-	477	568	673	794	931
60	-	-	-	-	-	557	661	780	916
65	-	-	-	-	-	-	646	764	899
68	-	-	-	-	-	-	-	-	-

Coefficient of performance (C.O.P.)

20	3.04	3.66	4.38	5.27	6.38	7.85	9.91	-	-
30	2.06	2.57	3.14	3.80	4.56	5.47	6.60	8.06	10.07
40	-	1.75	2.20	2.70	3.26	3.90	4.64	5.52	6.60
50	-	-	-	1.83	2.25	2.71	3.23	3.82	4.51
55	-	-	-	-	1.82	2.21	2.65	3.15	3.71
60	-	-	-	-	-	1.77	2.14	2.55	3.02
65	-	-	-	-	-	-	1.68	2.03	2.41
68	-	-	-	-	-	-	-	-	-

Nominal performance at to = 5 °C, tc = 50 °C

Cooling capacity	28 182	W
Power input	8 727	W
Current consumption	14.27	A
Mass flow	684	kg/h
C.O.P.	3.23	

Pressure switch settings

Maximum HP switch setting	45	bar(g)
Minimum LP switch setting	1.5	bar(g)
LP pump down setting	2.3	bar(g)

Sound power data

Sound power level		dB(A)
With acoustic hood		dB(A)

to: Evaporating temperature at dew point

tc: Condensing temperature at dew point

Rating conditions : Superheat = 10 K , Subcooling = 0 K

Tolerance according EN12900

Danfoss can accept no responsibility for possible errors in catalogues, brochures and other printed material. Danfoss reserves the right to alter its products without notice. This also applies to products already on order provided that such alternations can be made without subsequential changes being necessary in specifications already agreed. All trademarks in this material are property of the respective companies. Danfoss and the Danfoss logotype are trademarks of Danfoss A/S. All rights reserved.

Performance data at 35 Hz, ARI rating conditions

R410A

Cond. temp. in °C (tc)	Evaporating temperature in °C (to)							
	-25	-20	-15	-10	-5	0	5	10

Cooling capacity in W

20	14 123	16 984	20 456	24 608	29 509	35 228	41 834	-	-
30	12 521	15 329	18 679	22 642	27 287	32 683	38 900	46 008	54 075
40	-	13 654	16 770	20 432	24 709	29 673	35 393	41 941	49 385
50	-	-	-	17 909	21 711	26 136	31 255	37 141	43 865
55	-	-	-	-	20 046	24 166	28 951	34 474	40 809
60	-	-	-	-	-	22 086	26 522	31 672	37 610
65	-	-	-	-	-	-	24 068	28 856	34 416
68	-	-	-	-	-	-	-	-	-

Power input in W

20	4 350	4 350	4 373	4 381	4 341	4 215	3 968	-	-
30	5 623	5 529	5 511	5 534	5 562	5 559	5 489	5 317	5 007
40	-	7 127	6 987	6 942	6 956	6 993	7 018	6 995	6 888
50	-	-	-	8 777	8 694	8 690	8 727	8 770	8 784
55	-	-	-	-	9 746	9 690	9 702	9 748	9 791
60	-	-	-	-	-	10 820	10 787	10 814	10 867
65	-	-	-	-	-	-	12 002	11 991	12 032
68	-	-	-	-	-	-	-	-	-

Current consumption in A

20	11.52	11.82	12.11	12.40	12.65	12.88	13.07	-	-
30	10.87	10.90	10.95	11.01	11.08	11.14	11.19	11.21	11.21
40	-	12.49	12.29	12.13	12.00	11.89	11.80	11.70	11.61
50	-	-	-	15.13	14.80	14.52	14.27	14.06	13.87
55	-	-	-	-	16.71	16.34	16.02	15.75	15.50
60	-	-	-	-	-	18.40	18.00	17.66	17.37
65	-	-	-	-	-	-	20.14	19.74	19.40
68	-	-	-	-	-	-	-	-	-

Mass flow in kg/h

20	240	292	351	420	499	590	694	-	-
30	237	290	350	420	500	592	698	819	956
40	-	284	345	414	495	587	693	814	951
50	-	-	-	403	482	574	679	799	936
55	-	-	-	-	474	565	669	788	924
60	-	-	-	-	-	553	656	775	909
65	-	-	-	-	-	-	642	759	892
68	-	-	-	-	-	-	-	-	-

Coefficient of performance (C.O.P.)

20	3.25	3.90	4.68	5.62	6.80	8.36	10.54	-	-
30	2.23	2.77	3.39	4.09	4.91	5.88	7.09	8.65	10.80
40	-	1.92	2.40	2.94	3.55	4.24	5.04	6.00	7.17
50	-	-	-	2.04	2.50	3.01	3.58	4.23	4.99
55	-	-	-	-	2.06	2.49	2.98	3.54	4.17
60	-	-	-	-	-	2.04	2.46	2.93	3.46
65	-	-	-	-	-	-	2.01	2.41	2.86
68	-	-	-	-	-	-	-	-	-

Nominal performance at to = 7.2 °C, tc = 54.4 °C

Cooling capacity	31 589	W
Power input	9 599	W
Current consumption	15.67	A
Mass flow	721	kg/h
C.O.P.	3.29	

Pressure switch settings

Maximum HP switch setting	45	bar(g)
Minimum LP switch setting	1.5	bar(g)
LP pump down setting	2.3	bar(g)

Sound power data

Sound power level		dB(A)
With acoustic hood		dB(A)

to: Evaporating temperature at dew point

tc: Condensing temperature at dew point

Rating conditions : Superheat = 11.1 K , Subcooling = 8.3 K

Tolerance according EN12900

Danfoss can accept no responsibility for possible errors in catalogues, brochures and other printed material. Danfoss reserves the right to alter its products without notice. This also applies to products already on order provided that such alternations can be made without subsequential changes being necessary in specifications already agreed. All trademarks in this material are property of the respective companies. Danfoss and the Danfoss logotype are trademarks of Danfoss A/S. All rights reserved.

Performance data at 40 Hz, EN 12900 rating conditions

R410A

Cond. temp. in °C (tc)	Evaporating temperature in °C (to)							
	-25	-20	-15	-10	-5	0	5	10

Cooling capacity in W

20	15 198	18 243	21 953	26 403	31 671	37 834	44 968	-	-
30	13 375	16 334	19 879	24 085	29 030	34 789	41 442	49 063	57 730
40	-	14 427	17 681	21 516	26 011	31 242	37 287	44 220	52 121
50	-	-	-	18 579	22 498	27 074	32 384	38 505	45 513
55	-	-	-	-	20 519	24 721	29 616	35 283	41 797
60	-	-	-	-	-	22 167	26 617	31 798	37 787
65	-	-	-	-	-	-	23 372	28 035	33 468
68	-	-	-	-	-	-	-	-	-

Power input in W

20	4 960	4 989	5 038	5 071	5 052	4 947	4 720	-	-
30	6 364	6 298	6 305	6 351	6 398	6 413	6 360	6 203	5 907
40	-	8 059	7 945	7 922	7 956	8 011	8 051	8 041	7 946
50	-	-	-	9 945	9 885	9 899	9 953	10 011	10 037
55	-	-	-	-	11 039	11 003	11 033	11 095	11 151
60	-	-	-	-	-	12 240	12 227	12 271	12 338
65	-	-	-	-	-	-	13 553	13 561	13 618
68	-	-	-	-	-	-	-	-	-

Current consumption in A

20	13.59	14.27	14.86	15.35	15.73	15.99	16.11	-	-
30	11.96	12.20	12.43	12.63	12.79	12.90	12.94	12.90	12.78
40	-	13.69	13.54	13.43	13.35	13.28	13.22	13.16	13.07
50	-	-	-	16.65	16.31	16.06	15.88	15.77	15.71
55	-	-	-	-	18.36	18.01	17.77	17.62	17.57
60	-	-	-	-	-	20.15	19.84	19.66	19.60
65	-	-	-	-	-	-	21.97	21.75	21.68
68	-	-	-	-	-	-	-	-	-

Mass flow in kg/h

20	277	336	404	482	573	678	799	-	-
30	275	335	404	484	576	682	804	944	1 103
40	-	331	399	479	571	678	800	940	1 099
50	-	-	-	469	559	665	786	924	1 082
55	-	-	-	-	551	655	775	913	1 070
60	-	-	-	-	-	644	763	899	1 055
65	-	-	-	-	-	-	748	882	1 036
68	-	-	-	-	-	-	-	-	-

Coefficient of performance (C.O.P.)

20	3.06	3.66	4.36	5.21	6.27	7.65	9.53	-	-
30	2.10	2.59	3.15	3.79	4.54	5.42	6.52	7.91	9.77
40	-	1.79	2.23	2.72	3.27	3.90	4.63	5.50	6.56
50	-	-	-	1.87	2.28	2.73	3.25	3.85	4.53
55	-	-	-	-	1.86	2.25	2.68	3.18	3.75
60	-	-	-	-	-	1.81	2.18	2.59	3.06
65	-	-	-	-	-	-	1.72	2.07	2.46
68	-	-	-	-	-	-	-	-	-

Nominal performance at to = 5 °C, tc = 50 °C

Cooling capacity	32 384	W
Power input	9 953	W
Current consumption	15.88	A
Mass flow	786	kg/h
C.O.P.	3.25	

Pressure switch settings

Maximum HP switch setting	45	bar(g)
Minimum LP switch setting	1.5	bar(g)
LP pump down setting	2.3	bar(g)

Sound power data

Sound power level		dB(A)
With acoustic hood		dB(A)

to: Evaporating temperature at dew point

tc: Condensing temperature at dew point

Rating conditions : Superheat = 10 K, Subcooling = 0 K

Tolerance according EN12900

Danfoss can accept no responsibility for possible errors in catalogues, brochures and other printed material. Danfoss reserves the right to alter its products without notice. This also applies to products already on order provided that such alternations can be made without subsequential changes being necessary in specifications already agreed. All trademarks in this material are property of the respective companies. Danfoss and the Danfoss logotype are trademarks of Danfoss A/S. All rights reserved.

Performance data at 40 Hz, ARI rating conditions

R410A

Cond. temp. in °C (tc)	Evaporating temperature in °C (to)							
	-25	-20	-15	-10	-5	0	5	10

Cooling capacity in W

20	16 246	19 485	23 427	28 154	33 746	40 284	47 846	-	-
30	14 444	17 621	21 424	25 932	31 227	37 391	44 504	52 648	61 903
40	-	15 783	19 317	23 479	28 352	34 017	40 558	48 054	56 590
50	-	-	-	20 694	25 021	30 067	35 916	42 651	50 357
55	-	-	-	-	23 168	27 864	33 329	39 648	46 906
60	-	-	-	-	-	25 535	30 599	36 489	43 291
65	-	-	-	-	-	-	27 839	33 313	39 680
68	-	-	-	-	-	-	-	-	-

Power input in W

20	4 960	4 989	5 038	5 071	5 052	4 947	4 720	-	-
30	6 364	6 298	6 305	6 351	6 398	6 413	6 360	6 203	5 907
40	-	8 059	7 945	7 922	7 956	8 011	8 051	8 041	7 946
50	-	-	-	9 945	9 885	9 899	9 953	10 011	10 037
55	-	-	-	-	11 039	11 003	11 033	11 095	11 151
60	-	-	-	-	-	12 240	12 227	12 271	12 338
65	-	-	-	-	-	-	13 553	13 561	13 618
68	-	-	-	-	-	-	-	-	-

Current consumption in A

20	13.59	14.27	14.86	15.35	15.73	15.99	16.11	-	-
30	11.96	12.20	12.43	12.63	12.79	12.90	12.94	12.90	12.78
40	-	13.69	13.54	13.43	13.35	13.28	13.22	13.16	13.07
50	-	-	-	16.65	16.31	16.06	15.88	15.77	15.71
55	-	-	-	-	18.36	18.01	17.77	17.62	17.57
60	-	-	-	-	-	20.15	19.84	19.66	19.60
65	-	-	-	-	-	-	21.97	21.75	21.68
68	-	-	-	-	-	-	-	-	-

Mass flow in kg/h

20	275	334	401	479	570	674	793	-	-
30	274	333	402	481	572	678	799	937	1 094
40	-	329	397	476	568	673	794	933	1 090
50	-	-	-	466	556	660	780	918	1 074
55	-	-	-	-	548	651	770	906	1 062
60	-	-	-	-	-	640	757	892	1 047
65	-	-	-	-	-	-	743	876	1 029
68	-	-	-	-	-	-	-	-	-

Coefficient of performance (C.O.P.)

20	3.28	3.91	4.65	5.55	6.68	8.14	10.14	-	-
30	2.27	2.80	3.40	4.08	4.88	5.83	7.00	8.49	10.48
40	-	1.96	2.43	2.96	3.56	4.25	5.04	5.98	7.12
50	-	-	-	2.08	2.53	3.04	3.61	4.26	5.02
55	-	-	-	-	2.10	2.53	3.02	3.57	4.21
60	-	-	-	-	-	2.09	2.50	2.97	3.51
65	-	-	-	-	-	-	2.05	2.46	2.91
68	-	-	-	-	-	-	-	-	-

Nominal performance at to = 7.2 °C, tc = 54.4 °C

Cooling capacity	36 340	W
Power input	10 924	W
Current consumption	17.46	A
Mass flow	829	kg/h
C.O.P.	3.33	

Pressure switch settings

Maximum HP switch setting	45	bar(g)
Minimum LP switch setting	1.5	bar(g)
LP pump down setting	2.3	bar(g)

Sound power data

Sound power level		dB(A)
With acoustic hood		dB(A)

to: Evaporating temperature at dew point

tc: Condensing temperature at dew point

Rating conditions : Superheat = 11.1 K , Subcooling = 8.3 K

Tolerance according EN12900

Danfoss can accept no responsibility for possible errors in catalogues, brochures and other printed material. Danfoss reserves the right to alter its products without notice. This also applies to products already on order provided that such alternations can be made without subsequential changes being necessary in specifications already agreed. All trademarks in this material are property of the respective companies. Danfoss and the Danfoss logotype are trademarks of Danfoss A/S. All rights reserved.

Performance data at 45 Hz, EN 12900 rating conditions

R410A

Cond. temp. in °C (tc)	Evaporating temperature in °C (to)							
	-25	-20	-15	-10	-5	0	5	10

Cooling capacity in W

20	17 159	20 569	24 730	29 730	35 656	42 596	50 636	-	-
30	15 122	18 435	22 408	27 129	32 686	39 165	46 656	55 244	65 018
40	-	16 345	19 991	24 294	29 343	35 224	42 025	49 834	58 738
50	-	-	-	21 067	25 468	30 612	36 585	43 475	51 369
55	-	-	-	-	23 282	28 004	33 511	39 889	47 227
60	-	-	-	-	-	25 170	30 175	36 007	42 754
65	-	-	-	-	-	-	26 558	31 809	37 928
68	-	-	-	-	-	-	-	-	-

Power input in W

20	5 576	5 637	5 714	5 775	5 786	5 711	5 518	-	-
30	7 110	7 077	7 112	7 183	7 254	7 292	7 264	7 133	6 868
40	-	8 997	8 915	8 919	8 975	9 050	9 109	9 119	9 045
50	-	-	-	11 133	11 097	11 132	11 204	11 277	11 318
55	-	-	-	-	12 356	12 343	12 391	12 468	12 538
60	-	-	-	-	-	13 691	13 698	13 758	13 838
65	-	-	-	-	-	-	15 142	15 167	15 238
68	-	-	-	-	-	-	-	-	-

Current consumption in A

20	15.51	16.51	17.36	18.03	18.52	18.82	18.90	-	-
30	13.07	13.51	13.90	14.22	14.46	14.61	14.65	14.58	14.37
40	-	14.92	14.83	14.77	14.74	14.72	14.70	14.66	14.60
50	-	-	-	18.22	17.89	17.67	17.56	17.54	17.59
55	-	-	-	-	20.08	19.76	19.59	19.56	19.66
60	-	-	-	-	-	22.00	21.77	21.73	21.88
65	-	-	-	-	-	-	23.91	23.86	24.04
68	-	-	-	-	-	-	-	-	-

Mass flow in kg/h

20	312	378	454	543	645	763	899	-	-
30	311	378	455	545	649	768	906	1 063	1 242
40	-	375	452	541	644	764	902	1 059	1 238
50	-	-	-	531	633	751	888	1 044	1 222
55	-	-	-	-	625	742	877	1 032	1 209
60	-	-	-	-	-	731	864	1 018	1 193
65	-	-	-	-	-	-	850	1 001	1 175
68	-	-	-	-	-	-	-	-	-

Coefficient of performance (C.O.P.)

20	3.08	3.65	4.33	5.15	6.16	7.46	9.18	-	-
30	2.13	2.60	3.15	3.78	4.51	5.37	6.42	7.74	9.47
40	-	1.82	2.24	2.72	3.27	3.89	4.61	5.47	6.49
50	-	-	-	1.89	2.29	2.75	3.27	3.86	4.54
55	-	-	-	-	1.88	2.27	2.70	3.20	3.77
60	-	-	-	-	-	1.84	2.20	2.62	3.09
65	-	-	-	-	-	-	1.75	2.10	2.49
68	-	-	-	-	-	-	-	-	-

Nominal performance at to = 5 °C, tc = 50 °C

Cooling capacity	36 585	W
Power input	11 204	W
Current consumption	17.56	A
Mass flow	888	kg/h
C.O.P.	3.27	

Pressure switch settings

Maximum HP switch setting	45	bar(g)
Minimum LP switch setting	1.5	bar(g)
LP pump down setting	2.3	bar(g)

Sound power data

Sound power level		dB(A)
With acoustic hood		dB(A)

to: Evaporating temperature at dew point

tc: Condensing temperature at dew point

Rating conditions : Superheat = 10 K , Subcooling = 0 K

Tolerance according EN12900

Danfoss can accept no responsibility for possible errors in catalogues, brochures and other printed material. Danfoss reserves the right to alter its products without notice. This also applies to products already on order provided that such alternations can be made without subsequential changes being necessary in specifications already agreed. All trademarks in this material are property of the respective companies. Danfoss and the Danfoss logotype are trademarks of Danfoss A/S. All rights reserved.

Performance data at 45 Hz, ARI rating conditions

R410A

Cond. temp. in °C (tc)	Evaporating temperature in °C (to)							
	-25	-20	-15	-10	-5	0	5	10

Cooling capacity in W

20	18 342	21 968	26 391	31 702	37 992	45 354	53 878	-	-
30	16 331	19 887	24 149	29 209	35 160	42 094	50 104	59 281	69 718
40	-	17 881	21 841	26 510	31 983	38 352	45 712	54 155	63 774
50	-	-	-	23 465	28 324	33 995	40 574	48 156	56 837
55	-	-	-	-	26 288	31 565	37 712	44 825	53 000
60	-	-	-	-	-	28 993	34 690	41 320	48 981
65	-	-	-	-	-	-	31 634	37 796	44 969
68	-	-	-	-	-	-	-	-	-

Power input in W

20	5 576	5 637	5 714	5 775	5 786	5 711	5 518	-	-
30	7 110	7 077	7 112	7 183	7 254	7 292	7 264	7 133	6 868
40	-	8 997	8 915	8 919	8 975	9 050	9 109	9 119	9 045
50	-	-	-	11 133	11 097	11 132	11 204	11 277	11 318
55	-	-	-	-	12 356	12 343	12 391	12 468	12 538
60	-	-	-	-	-	13 691	13 698	13 758	13 838
65	-	-	-	-	-	-	15 142	15 167	15 238
68	-	-	-	-	-	-	-	-	-

Current consumption in A

20	15.51	16.51	17.36	18.03	18.52	18.82	18.90	-	-
30	13.07	13.51	13.90	14.22	14.46	14.61	14.65	14.58	14.37
40	-	14.92	14.83	14.77	14.74	14.72	14.70	14.66	14.60
50	-	-	-	18.22	17.89	17.67	17.56	17.54	17.59
55	-	-	-	-	20.08	19.76	19.59	19.56	19.66
60	-	-	-	-	-	22.00	21.77	21.73	21.88
65	-	-	-	-	-	-	23.91	23.86	24.04
68	-	-	-	-	-	-	-	-	-

Mass flow in kg/h

20	310	376	451	539	641	758	893	-	-
30	309	376	453	541	644	763	899	1 055	1 232
40	-	372	449	538	640	759	895	1 051	1 229
50	-	-	-	528	629	746	881	1 036	1 212
55	-	-	-	-	621	737	871	1 025	1 200
60	-	-	-	-	-	726	859	1 010	1 184
65	-	-	-	-	-	-	844	994	1 166
68	-	-	-	-	-	-	-	-	-

Coefficient of performance (C.O.P.)

20	3.29	3.90	4.62	5.49	6.57	7.94	9.76	-	-
30	2.30	2.81	3.40	4.07	4.85	5.77	6.90	8.31	10.15
40	-	1.99	2.45	2.97	3.56	4.24	5.02	5.94	7.05
50	-	-	-	2.11	2.55	3.05	3.62	4.27	5.02
55	-	-	-	-	2.13	2.56	3.04	3.60	4.23
60	-	-	-	-	-	2.12	2.53	3.00	3.54
65	-	-	-	-	-	-	2.09	2.49	2.95
68	-	-	-	-	-	-	-	-	-

Nominal performance at to = 7.2 °C, tc = 54.4 °C

Cooling capacity	41 095	W
Power input	12 276	W
Current consumption	19.31	A
Mass flow	937	kg/h
C.O.P.	3.35	

Pressure switch settings

Maximum HP switch setting	45	bar(g)
Minimum LP switch setting	1.5	bar(g)
LP pump down setting	2.3	bar(g)

Sound power data

Sound power level		dB(A)
With acoustic hood		dB(A)

to: Evaporating temperature at dew point

tc: Condensing temperature at dew point

Rating conditions : Superheat = 11.1 K , Subcooling = 8.3 K

Tolerance according EN12900

Danfoss can accept no responsibility for possible errors in catalogues, brochures and other printed material. Danfoss reserves the right to alter its products without notice. This also applies to products already on order provided that such alternations can be made without subsequential changes being necessary in specifications already agreed. All trademarks in this material are property of the respective companies. Danfoss and the Danfoss logotype are trademarks of Danfoss A/S. All rights reserved.

Performance data at 50 Hz, EN 12900 rating conditions
R410A

Cond. temp. in °C (tc)	Evaporating temperature in °C (to)							
	-25	-20	-15	-10	-5	0	5	10

Cooling capacity in W

20	19 095	22 879	27 501	33 059	39 650	47 372	56 322	-	-
30	16 837	20 510	24 918	30 161	36 334	43 537	51 866	61 420	72 296
40	-	18 235	22 281	27 057	32 664	39 197	46 755	55 435	65 335
50	-	-	-	23 544	28 433	34 146	40 783	48 439	57 214
55	-	-	-	-	26 043	31 291	37 410	44 499	52 655
60	-	-	-	-	-	28 181	33 746	40 229	47 728
65	-	-	-	-	-	-	29 764	35 604	42 409
68	-	-	-	-	-	-	-	-	-

Power input in W

20	6 197	6 292	6 402	6 495	6 540	6 506	6 361	-	-
30	7 861	7 865	7 932	8 031	8 130	8 197	8 201	8 109	7 891
40	-	9 944	9 898	9 932	10 013	10 110	10 192	10 227	10 183
50	-	-	-	12 339	12 332	12 389	12 478	12 568	12 628
55	-	-	-	-	13 699	13 709	13 776	13 867	13 952
60	-	-	-	-	-	15 174	15 200	15 275	15 367
65	-	-	-	-	-	-	16 769	16 810	16 892
68	-	-	-	-	-	-	-	-	-

Current consumption in A

20	17.28	18.56	19.62	20.45	21.05	21.38	21.45	-	-
30	14.19	14.81	15.33	15.76	16.08	16.28	16.34	16.24	15.99
40	-	16.20	16.17	16.16	16.18	16.20	16.22	16.22	16.18
50	-	-	-	19.85	19.53	19.35	19.30	19.36	19.52
55	-	-	-	-	21.87	21.58	21.48	21.56	21.80
60	-	-	-	-	-	23.93	23.78	23.87	24.19
65	-	-	-	-	-	-	25.98	26.08	26.47
68	-	-	-	-	-	-	-	-	-

Mass flow in kg/h

20	346	420	504	603	717	848	1 000	-	-
30	346	420	506	606	721	854	1 007	1 182	1 381
40	-	418	503	602	717	850	1 003	1 178	1 377
50	-	-	-	594	707	838	989	1 163	1 360
55	-	-	-	-	700	829	979	1 151	1 348
60	-	-	-	-	-	819	967	1 137	1 332
65	-	-	-	-	-	-	952	1 121	1 313
68	-	-	-	-	-	-	-	-	-

Coefficient of performance (C.O.P.)

20	3.08	3.64	4.30	5.09	6.06	7.28	8.85	-	-
30	2.14	2.61	3.14	3.76	4.47	5.31	6.32	7.57	9.16
40	-	1.83	2.25	2.72	3.26	3.88	4.59	5.42	6.42
50	-	-	-	1.91	2.31	2.76	3.27	3.85	4.53
55	-	-	-	-	1.90	2.28	2.72	3.21	3.77
60	-	-	-	-	-	1.86	2.22	2.63	3.11
65	-	-	-	-	-	-	1.77	2.12	2.51
68	-	-	-	-	-	-	-	-	-

Nominal performance at to = 5 °C, tc = 50 °C

Cooling capacity	40 783	W
Power input	12 478	W
Current consumption	19.30	A
Mass flow	989	kg/h
C.O.P.	3.27	

Pressure switch settings

Maximum HP switch setting	45	bar(g)
Minimum LP switch setting	1.5	bar(g)
LP pump down setting	2.3	bar(g)

Sound power data

Sound power level		dB(A)
With acoustic hood		dB(A)

to: Evaporating temperature at dew point

tc: Condensing temperature at dew point

Rating conditions : Superheat = 10 K , Subcooling = 0 K

Tolerance according EN12900

Danfoss can accept no responsibility for possible errors in catalogues, brochures and other printed material. Danfoss reserves the right to alter its products without notice. This also applies to products already on order provided that such alternations can be made without subsequential changes being necessary in specifications already agreed. All trademarks in this material are property of the respective companies. Danfoss and the Danfoss logotype are trademarks of Danfoss A/S. All rights reserved.

Performance data at 50 Hz, ARI rating conditions

R410A

Cond. temp. in °C (tc)	Evaporating temperature in °C (to)							
	-25	-20	-15	-10	-5	0	5	10

Cooling capacity in W

20	20 412	24 436	29 348	35 251	42 247	50 439	59 928	-	-
30	18 183	22 126	26 855	32 473	39 085	46 793	55 699	65 908	77 522
40	-	19 949	24 343	29 526	35 603	42 678	50 856	60 241	70 937
50	-	-	-	26 224	31 620	37 920	45 230	53 656	63 304
55	-	-	-	-	29 405	35 270	42 100	50 005	59 091
60	-	-	-	-	-	32 462	38 795	46 164	54 680
65	-	-	-	-	-	-	35 453	42 306	50 281
68	-	-	-	-	-	-	-	-	-

Power input in W

20	6 197	6 292	6 402	6 495	6 540	6 506	6 361	-	-
30	7 861	7 865	7 932	8 031	8 130	8 197	8 201	8 109	7 891
40	-	9 944	9 898	9 932	10 013	10 110	10 192	10 227	10 183
50	-	-	-	12 339	12 332	12 389	12 478	12 568	12 628
55	-	-	-	-	13 699	13 709	13 776	13 867	13 952
60	-	-	-	-	-	15 174	15 200	15 275	15 367
65	-	-	-	-	-	-	16 769	16 810	16 892
68	-	-	-	-	-	-	-	-	-

Current consumption in A

20	17.28	18.56	19.62	20.45	21.05	21.38	21.45	-	-
30	14.19	14.81	15.33	15.76	16.08	16.28	16.34	16.24	15.99
40	-	16.20	16.17	16.16	16.18	16.20	16.22	16.22	16.18
50	-	-	-	19.85	19.53	19.35	19.30	19.36	19.52
55	-	-	-	-	21.87	21.58	21.48	21.56	21.80
60	-	-	-	-	-	23.93	23.78	23.87	24.19
65	-	-	-	-	-	-	25.98	26.08	26.47
68	-	-	-	-	-	-	-	-	-

Mass flow in kg/h

20	344	417	501	599	712	843	993	-	-
30	344	418	503	602	716	848	1 000	1 173	1 370
40	-	415	500	599	713	845	996	1 169	1 367
50	-	-	-	590	703	833	983	1 154	1 350
55	-	-	-	-	695	824	972	1 143	1 337
60	-	-	-	-	-	813	960	1 129	1 322
65	-	-	-	-	-	-	946	1 113	1 303
68	-	-	-	-	-	-	-	-	-

Coefficient of performance (C.O.P.)

20	3.29	3.88	4.58	5.43	6.46	7.75	9.42	-	-
30	2.31	2.81	3.39	4.04	4.81	5.71	6.79	8.13	9.82
40	-	2.01	2.46	2.97	3.56	4.22	4.99	5.89	6.97
50	-	-	-	2.13	2.56	3.06	3.62	4.27	5.01
55	-	-	-	-	2.15	2.57	3.06	3.61	4.24
60	-	-	-	-	-	2.14	2.55	3.02	3.56
65	-	-	-	-	-	-	2.11	2.52	2.98
68	-	-	-	-	-	-	-	-	-

Nominal performance at to = 7.2 °C, tc = 54.4 °C

Cooling capacity	45 853	W
Power input	13 653	W
Current consumption	21.22	A
Mass flow	1 046	kg/h
C.O.P.	3.36	

Pressure switch settings

Maximum HP switch setting	45	bar(g)
Minimum LP switch setting	1.5	bar(g)
LP pump down setting	2.3	bar(g)

Sound power data

Sound power level		dB(A)
With acoustic hood		dB(A)

to: Evaporating temperature at dew point

tc: Condensing temperature at dew point

Rating conditions : Superheat = 11.1 K , Subcooling = 8.3 K

Tolerance according EN12900

Danfoss can accept no responsibility for possible errors in catalogues, brochures and other printed material. Danfoss reserves the right to alter its products without notice. This also applies to products already on order provided that such alternations can be made without subsequential changes being necessary in specifications already agreed. All trademarks in this material are property of the respective companies. Danfoss and the Danfoss logotype are trademarks of Danfoss A/S. All rights reserved.

Performance data at 55 Hz, EN 12900 rating conditions

R410A

Cond. temp. in °C (tc)	Evaporating temperature in °C (to)							
	-25	-20	-15	-10	-5	0	5	10

Cooling capacity in W

20	21 006	25 173	30 265	36 389	43 652	52 162	62 027	-	-
30	18 518	22 560	27 411	33 181	39 976	47 904	57 072	67 590	79 563
40	-	20 097	24 550	29 806	35 974	43 161	51 475	61 023	71 914
50	-	-	-	26 010	31 392	37 679	44 979	53 400	63 048
55	-	-	-	-	28 803	34 581	41 314	49 111	58 080
60	-	-	-	-	-	31 201	37 329	44 463	52 711
65	-	-	-	-	-	-	32 991	39 422	46 910
68	-	-	-	-	-	-	-	-	-

Power input in W

20	6 824	6 955	7 100	7 230	7 317	7 333	7 249	-	-
30	8 617	8 663	8 765	8 895	9 025	9 126	9 171	9 130	8 976
40	-	10 898	10 894	10 961	11 070	11 193	11 301	11 367	11 362
50	-	-	-	13 563	13 587	13 668	13 777	13 886	13 966
55	-	-	-	-	15 066	15 101	15 187	15 293	15 393
60	-	-	-	-	-	16 688	16 734	16 822	16 925
65	-	-	-	-	-	-	18 435	18 489	18 579
68	-	-	-	-	-	-	-	-	-

Current consumption in A

20	18.89	20.40	21.64	22.61	23.29	23.67	23.75	-	-
30	15.33	16.10	16.75	17.28	17.66	17.90	17.99	17.90	17.63
40	-	17.52	17.55	17.60	17.66	17.73	17.79	17.82	17.83
50	-	-	-	21.52	21.24	21.10	21.10	21.24	21.49
55	-	-	-	-	23.72	23.47	23.44	23.61	23.97
60	-	-	-	-	-	25.96	25.88	26.08	26.55
65	-	-	-	-	-	-	28.18	28.40	28.96
68	-	-	-	-	-	-	-	-	-

Mass flow in kg/h

20	380	461	555	663	789	934	1 101	-	-
30	380	462	557	666	793	940	1 108	1 300	1 519
40	-	461	555	664	790	936	1 104	1 297	1 516
50	-	-	-	656	781	925	1 091	1 282	1 499
55	-	-	-	-	774	916	1 081	1 270	1 486
60	-	-	-	-	-	906	1 069	1 257	1 471
65	-	-	-	-	-	-	1 056	1 241	1 453
68	-	-	-	-	-	-	-	-	-

Coefficient of performance (C.O.P.)

20	3.08	3.62	4.26	5.03	5.97	7.11	8.56	-	-
30	2.15	2.60	3.13	3.73	4.43	5.25	6.22	7.40	8.86
40	-	1.84	2.25	2.72	3.25	3.86	4.55	5.37	6.33
50	-	-	-	1.92	2.31	2.76	3.26	3.85	4.51
55	-	-	-	-	1.91	2.29	2.72	3.21	3.77
60	-	-	-	-	-	1.87	2.23	2.64	3.11
65	-	-	-	-	-	-	1.79	2.13	2.52
68	-	-	-	-	-	-	-	-	-

Nominal performance at to = 5 °C, tc = 50 °C

Cooling capacity	44 979	W
Power input	13 777	W
Current consumption	21.10	A
Mass flow	1 091	kg/h
C.O.P.	3.26	

Pressure switch settings

Maximum HP switch setting	45	bar(g)
Minimum LP switch setting	1.5	bar(g)
LP pump down setting	2.3	bar(g)

Sound power data

Sound power level		dB(A)
With acoustic hood		dB(A)

to: Evaporating temperature at dew point

tc: Condensing temperature at dew point

Rating conditions : Superheat = 10 K , Subcooling = 0 K

Tolerance according EN12900

Danfoss can accept no responsibility for possible errors in catalogues, brochures and other printed material. Danfoss reserves the right to alter its products without notice. This also applies to products already on order provided that such alternations can be made without subsequential changes being necessary in specifications already agreed. All trademarks in this material are property of the respective companies. Danfoss and the Danfoss logotype are trademarks of Danfoss A/S. All rights reserved.

Performance data at 55 Hz, ARI rating conditions

R410A

Cond. temp. in °C (tc)	Evaporating temperature in °C (to)							
	-25	-20	-15	-10	-5	0	5	10

Cooling capacity in W

20	22 454	26 886	32 298	38 802	46 512	55 539	65 998	-	-
30	19 998	24 337	29 541	35 725	43 002	51 486	61 290	72 529	85 314
40	-	21 985	26 822	32 526	39 211	46 995	55 991	66 314	78 080
50	-	-	-	28 970	34 911	41 843	49 884	59 150	69 759
55	-	-	-	-	32 521	38 978	46 494	55 188	65 179
60	-	-	-	-	-	35 941	42 914	51 023	60 389
65	-	-	-	-	-	-	39 297	46 842	55 618
68	-	-	-	-	-	-	-	-	-

Power input in W

20	6 824	6 955	7 100	7 230	7 317	7 333	7 249	-	-
30	8 617	8 663	8 765	8 895	9 025	9 126	9 171	9 130	8 976
40	-	10 898	10 894	10 961	11 070	11 193	11 301	11 367	11 362
50	-	-	-	13 563	13 587	13 668	13 777	13 886	13 966
55	-	-	-	-	15 066	15 101	15 187	15 293	15 393
60	-	-	-	-	-	16 688	16 734	16 822	16 925
65	-	-	-	-	-	-	18 435	18 489	18 579
68	-	-	-	-	-	-	-	-	-

Current consumption in A

20	18.89	20.40	21.64	22.61	23.29	23.67	23.75	-	-
30	15.33	16.10	16.75	17.28	17.66	17.90	17.99	17.90	17.63
40	-	17.52	17.55	17.60	17.66	17.73	17.79	17.82	17.83
50	-	-	-	21.52	21.24	21.10	21.10	21.24	21.49
55	-	-	-	-	23.72	23.47	23.44	23.61	23.97
60	-	-	-	-	-	25.96	25.88	26.08	26.55
65	-	-	-	-	-	-	28.18	28.40	28.96
68	-	-	-	-	-	-	-	-	-

Mass flow in kg/h

20	378	458	551	659	784	928	1 093	-	-
30	378	459	553	662	788	933	1 100	1 291	1 508
40	-	458	551	660	785	930	1 097	1 287	1 504
50	-	-	-	652	776	919	1 084	1 273	1 488
55	-	-	-	-	769	910	1 074	1 261	1 475
60	-	-	-	-	-	900	1 062	1 248	1 460
65	-	-	-	-	-	-	1 048	1 232	1 442
68	-	-	-	-	-	-	-	-	-

Coefficient of performance (C.O.P.)

20	3.29	3.87	4.55	5.37	6.36	7.57	9.10	-	-
30	2.32	2.81	3.37	4.02	4.76	5.64	6.68	7.94	9.50
40	-	2.02	2.46	2.97	3.54	4.20	4.95	5.83	6.87
50	-	-	-	2.14	2.57	3.06	3.62	4.26	4.99
55	-	-	-	-	2.16	2.58	3.06	3.61	4.23
60	-	-	-	-	-	2.15	2.56	3.03	3.57
65	-	-	-	-	-	-	2.13	2.53	2.99
68	-	-	-	-	-	-	-	-	-

Nominal performance at to = 7.2 °C, tc = 54.4 °C

Cooling capacity	50 615	W
Power input	15 057	W
Current consumption	23.20	A
Mass flow	1 155	kg/h
C.O.P.	3.36	

Pressure switch settings

Maximum HP switch setting	45	bar(g)
Minimum LP switch setting	1.5	bar(g)
LP pump down setting	2.3	bar(g)

Sound power data

Sound power level		dB(A)
With acoustic hood		dB(A)

to: Evaporating temperature at dew point

tc: Condensing temperature at dew point

Rating conditions : Superheat = 11.1 K , Subcooling = 8.3 K

Tolerance according EN12900

Danfoss can accept no responsibility for possible errors in catalogues, brochures and other printed material. Danfoss reserves the right to alter its products without notice. This also applies to products already on order provided that such alternations can be made without subsequential changes being necessary in specifications already agreed. All trademarks in this material are property of the respective companies. Danfoss and the Danfoss logotype are trademarks of Danfoss A/S. All rights reserved.

Performance data at 60 Hz, EN 12900 rating conditions

R410A

Cond. temp. in °C (tc)	Evaporating temperature in °C (to)							
	-25	-20	-15	-10	-5	0	5	10

Cooling capacity in W

20	22 891	27 452	33 023	39 720	47 662	56 966	67 749	-	-
30	20 166	24 585	29 886	36 189	43 610	52 266	62 274	73 753	86 819
40	-	21 931	26 799	32 541	39 274	47 117	56 186	66 599	78 473
50	-	-	-	28 464	34 345	41 209	49 173	58 355	68 871
55	-	-	-	-	31 560	37 873	45 222	53 726	63 502
60	-	-	-	-	-	34 230	40 924	48 708	57 701
65	-	-	-	-	-	-	36 238	43 262	51 432
68	-	-	-	-	-	-	-	-	-

Power input in W

20	7 456	7 626	7 808	7 979	8 115	8 191	8 184	-	-
30	9 377	9 470	9 611	9 775	9 940	10 081	10 174	10 196	10 122
40	-	11 860	11 904	12 007	12 146	12 297	12 435	12 538	12 581
50	-	-	-	14 806	14 865	14 970	15 100	15 229	15 333
55	-	-	-	-	16 457	16 520	16 624	16 746	16 861
60	-	-	-	-	-	18 234	18 299	18 399	18 511
65	-	-	-	-	-	-	20 140	20 205	20 300
68	-	-	-	-	-	-	-	-	-

Current consumption in A

20	20.34	22.03	23.42	24.50	25.26	25.70	25.80	-	-
30	16.49	17.39	18.15	18.75	19.20	19.49	19.60	19.54	19.29
40	-	18.87	18.97	19.08	19.20	19.31	19.40	19.48	19.54
50	-	-	-	23.25	23.01	22.91	22.97	23.17	23.50
55	-	-	-	-	25.64	25.44	25.47	25.72	26.18
60	-	-	-	-	-	28.08	28.07	28.36	28.94
65	-	-	-	-	-	-	30.49	30.82	31.52
68	-	-	-	-	-	-	-	-	-

Mass flow in kg/h

20	414	502	605	723	861	1 020	1 202	-	-
30	414	504	607	727	865	1 025	1 209	1 419	1 658
40	-	503	605	725	863	1 022	1 205	1 415	1 654
50	-	-	-	718	854	1 011	1 193	1 401	1 637
55	-	-	-	-	848	1 004	1 184	1 390	1 625
60	-	-	-	-	-	994	1 172	1 377	1 610
65	-	-	-	-	-	-	1 159	1 362	1 593
68	-	-	-	-	-	-	-	-	-

Coefficient of performance (C.O.P.)

20	3.07	3.60	4.23	4.98	5.87	6.95	8.28	-	-
30	2.15	2.60	3.11	3.70	4.39	5.18	6.12	7.23	8.58
40	-	1.85	2.25	2.71	3.23	3.83	4.52	5.31	6.24
50	-	-	-	1.92	2.31	2.75	3.26	3.83	4.49
55	-	-	-	-	1.92	2.29	2.72	3.21	3.77
60	-	-	-	-	-	1.88	2.24	2.65	3.12
65	-	-	-	-	-	-	1.80	2.14	2.53
68	-	-	-	-	-	-	-	-	-

Nominal performance at to = 5 °C, tc = 50 °C

Cooling capacity	49 173	W
Power input	15 100	W
Current consumption	22.97	A
Mass flow	1 193	kg/h
C.O.P.	3.26	

Pressure switch settings

Maximum HP switch setting	45	bar(g)
Minimum LP switch setting	1.5	bar(g)
LP pump down setting	2.3	bar(g)

Sound power data

Sound power level	85	dB(A)
With acoustic hood	78	dB(A)

to: Evaporating temperature at dew point

tc: Condensing temperature at dew point

Rating conditions : Superheat = 10 K , Subcooling = 0 K

Tolerance according EN12900

Danfoss can accept no responsibility for possible errors in catalogues, brochures and other printed material. Danfoss reserves the right to alter its products without notice. This also applies to products already on order provided that such alternations can be made without subsequential changes being necessary in specifications already agreed. All trademarks in this material are property of the respective companies. Danfoss and the Danfoss logotype are trademarks of Danfoss A/S. All rights reserved.

Performance data at 60 Hz, ARI rating conditions

R410A

Cond. temp. in °C (tc)	Evaporating temperature in °C (to)							
	-25	-20	-15	-10	-5	0	5	10

Cooling capacity in W

20	24 469	29 320	35 240	42 355	50 785	60 655	72 086	-	-
30	21 778	26 522	32 209	38 964	46 911	56 174	66 877	79 142	93 094
40	-	23 992	29 279	35 509	42 808	51 302	61 115	72 373	85 201
50	-	-	-	31 703	38 195	45 764	54 535	64 639	76 201
55	-	-	-	-	35 635	42 689	50 892	60 374	71 263
60	-	-	-	-	-	39 430	47 047	55 895	66 106
65	-	-	-	-	-	-	43 165	51 405	60 978
68	-	-	-	-	-	-	-	-	-

Power input in W

20	7 456	7 626	7 808	7 979	8 115	8 191	8 184	-	-
30	9 377	9 470	9 611	9 775	9 940	10 081	10 174	10 196	10 122
40	-	11 860	11 904	12 007	12 146	12 297	12 435	12 538	12 581
50	-	-	-	14 806	14 865	14 970	15 100	15 229	15 333
55	-	-	-	-	16 457	16 520	16 624	16 746	16 861
60	-	-	-	-	-	18 234	18 299	18 399	18 511
65	-	-	-	-	-	-	20 140	20 205	20 300
68	-	-	-	-	-	-	-	-	-

Current consumption in A

20	20.34	22.03	23.42	24.50	25.26	25.70	25.80	-	-
30	16.49	17.39	18.15	18.75	19.20	19.49	19.60	19.54	19.29
40	-	18.87	18.97	19.08	19.20	19.31	19.40	19.48	19.54
50	-	-	-	23.25	23.01	22.91	22.97	23.17	23.50
55	-	-	-	-	25.64	25.44	25.47	25.72	26.18
60	-	-	-	-	-	28.08	28.07	28.36	28.94
65	-	-	-	-	-	-	30.49	30.82	31.52
68	-	-	-	-	-	-	-	-	-

Mass flow in kg/h

20	411	499	601	719	855	1 013	1 194	-	-
30	412	501	603	722	860	1 018	1 201	1 409	1 645
40	-	500	602	720	857	1 015	1 197	1 405	1 641
50	-	-	-	714	849	1 005	1 185	1 391	1 625
55	-	-	-	-	842	997	1 175	1 380	1 613
60	-	-	-	-	-	988	1 164	1 367	1 598
65	-	-	-	-	-	-	1 151	1 352	1 581
68	-	-	-	-	-	-	-	-	-

Coefficient of performance (C.O.P.)

20	3.28	3.84	4.51	5.31	6.26	7.41	8.81	-	-
30	2.32	2.80	3.35	3.99	4.72	5.57	6.57	7.76	9.20
40	-	2.02	2.46	2.96	3.52	4.17	4.91	5.77	6.77
50	-	-	-	2.14	2.57	3.06	3.61	4.24	4.97
55	-	-	-	-	2.17	2.58	3.06	3.61	4.23
60	-	-	-	-	-	2.16	2.57	3.04	3.57
65	-	-	-	-	-	-	2.14	2.54	3.00
68	-	-	-	-	-	-	-	-	-

Nominal performance at to = 7.2 °C, tc = 54.4 °C

Cooling capacity	55 380	W
Power input	16 487	W
Current consumption	25.24	A
Mass flow	1 263	kg/h
C.O.P.	3.36	

Pressure switch settings

Maximum HP switch setting	45	bar(g)
Minimum LP switch setting	1.5	bar(g)
LP pump down setting	2.3	bar(g)

Sound power data

Sound power level	85	dB(A)
With acoustic hood	78	dB(A)

to: Evaporating temperature at dew point

tc: Condensing temperature at dew point

Rating conditions : Superheat = 11.1 K , Subcooling = 8.3 K

Tolerance according EN12900

Danfoss can accept no responsibility for possible errors in catalogues, brochures and other printed material. Danfoss reserves the right to alter its products without notice. This also applies to products already on order provided that such alternations can be made without subsequential changes being necessary in specifications already agreed. All trademarks in this material are property of the respective companies. Danfoss and the Danfoss logotype are trademarks of Danfoss A/S. All rights reserved.

Performance data at 65 Hz, EN 12900 rating conditions

R410A

Cond. temp. in °C (tc)	Evaporating temperature in °C (to)							
	-25	-20	-15	-10	-5	0	5	10

Cooling capacity in W

20	24 751	29 715	35 773	43 054	51 682	61 785	73 489	-	-
30	21 781	26 584	32 343	39 185	47 236	56 623	67 472	79 910	94 064
40	-	23 737	29 027	35 260	42 564	51 064	60 888	72 162	85 013
50	-	-	-	30 906	37 293	44 737	53 365	63 305	74 682
55	-	-	-	-	34 316	41 168	49 135	58 344	68 921
60	-	-	-	-	-	37 268	44 531	52 966	62 700
65	-	-	-	-	-	-	39 505	47 125	55 973
68	-	-	-	-	-	-	-	-	-

Power input in W

20	8 093	8 305	8 528	8 744	8 934	9 080	9 163	-	-
30	10 143	10 287	10 469	10 671	10 874	11 060	11 210	11 306	11 330
40	-	12 829	12 926	13 069	13 241	13 422	13 595	13 740	13 840
50	-	-	-	16 068	16 164	16 296	16 447	16 597	16 729
55	-	-	-	-	17 874	17 965	18 088	18 224	18 355
60	-	-	-	-	-	19 811	19 895	20 006	20 125
65	-	-	-	-	-	-	21 883	21 958	22 054
68	-	-	-	-	-	-	-	-	-

Current consumption in A

20	21.65	23.47	24.96	26.12	26.95	27.45	27.61	-	-
30	17.66	18.67	19.52	20.19	20.70	21.03	21.19	21.17	20.97
40	-	20.26	20.44	20.61	20.78	20.93	21.07	21.20	21.31
50	-	-	-	25.03	24.84	24.80	24.90	25.16	25.56
55	-	-	-	-	27.63	27.49	27.57	27.88	28.42
60	-	-	-	-	-	30.29	30.34	30.71	31.38
65	-	-	-	-	-	-	32.93	33.34	34.15
68	-	-	-	-	-	-	-	-	-

Mass flow in kg/h

20	446	543	654	784	933	1 106	1 304	-	-
30	447	545	657	787	937	1 111	1 310	1 538	1 796
40	-	544	656	785	935	1 108	1 306	1 533	1 792
50	-	-	-	780	927	1 098	1 295	1 519	1 776
55	-	-	-	-	922	1 091	1 286	1 509	1 764
60	-	-	-	-	-	1 083	1 276	1 497	1 750
65	-	-	-	-	-	-	1 264	1 483	1 733
68	-	-	-	-	-	-	-	-	-

Coefficient of performance (C.O.P.)

20	3.06	3.58	4.19	4.92	5.78	6.80	8.02	-	-
30	2.15	2.58	3.09	3.67	4.34	5.12	6.02	7.07	8.30
40	-	1.85	2.25	2.70	3.21	3.80	4.48	5.25	6.14
50	-	-	-	1.92	2.31	2.75	3.24	3.81	4.46
55	-	-	-	-	1.92	2.29	2.72	3.20	3.75
60	-	-	-	-	-	1.88	2.24	2.65	3.12
65	-	-	-	-	-	-	1.81	2.15	2.54
68	-	-	-	-	-	-	-	-	-

Nominal performance at to = 5 °C, tc = 50 °C

Cooling capacity	53 365	W
Power input	16 447	W
Current consumption	24.90	A
Mass flow	1 295	kg/h
C.O.P.	3.24	

Pressure switch settings

Maximum HP switch setting	45	bar(g)
Minimum LP switch setting	1.5	bar(g)
LP pump down setting	2.3	bar(g)

Sound power data

Sound power level		dB(A)
With acoustic hood		dB(A)

to: Evaporating temperature at dew point

tc: Condensing temperature at dew point

Rating conditions : Superheat = 10 K , Subcooling = 0 K

Tolerance according EN12900

Danfoss can accept no responsibility for possible errors in catalogues, brochures and other printed material. Danfoss reserves the right to alter its products without notice. This also applies to products already on order provided that such alternations can be made without subsequential changes being necessary in specifications already agreed. All trademarks in this material are property of the respective companies. Danfoss and the Danfoss logotype are trademarks of Danfoss A/S. All rights reserved.

Performance data at 65 Hz, ARI rating conditions
R410A

Cond. temp. in °C (tc)	Evaporating temperature in °C (to)							
	-25	-20	-15	-10	-5	0	5	10

Cooling capacity in W

20	26 458	31 736	38 176	45 909	55 068	65 785	78 193	-	-
30	23 522	28 679	34 857	42 190	50 812	60 857	72 459	85 749	100 863
40	-	25 968	31 713	38 477	46 394	55 600	66 230	78 419	92 302
50	-	-	-	34 424	41 474	49 681	59 185	70 122	82 631
55	-	-	-	-	38 746	46 403	55 295	65 563	77 345
60	-	-	-	-	-	42 929	51 194	60 781	71 833
65	-	-	-	-	-	-	47 057	55 995	66 363
68	-	-	-	-	-	-	-	-	-

Power input in W

20	8 093	8 305	8 528	8 744	8 934	9 080	9 163	-	-
30	10 143	10 287	10 469	10 671	10 874	11 060	11 210	11 306	11 330
40	-	12 829	12 926	13 069	13 241	13 422	13 595	13 740	13 840
50	-	-	-	16 068	16 164	16 296	16 447	16 597	16 729
55	-	-	-	-	17 874	17 965	18 088	18 224	18 355
60	-	-	-	-	-	19 811	19 895	20 006	20 125
65	-	-	-	-	-	-	21 883	21 958	22 054
68	-	-	-	-	-	-	-	-	-

Current consumption in A

20	21.65	23.47	24.96	26.12	26.95	27.45	27.61	-	-
30	17.66	18.67	19.52	20.19	20.70	21.03	21.19	21.17	20.97
40	-	20.26	20.44	20.61	20.78	20.93	21.07	21.20	21.31
50	-	-	-	25.03	24.84	24.80	24.90	25.16	25.56
55	-	-	-	-	27.63	27.49	27.57	27.88	28.42
60	-	-	-	-	-	30.29	30.34	30.71	31.38
65	-	-	-	-	-	-	32.93	33.34	34.15
68	-	-	-	-	-	-	-	-	-

Mass flow in kg/h

20	444	540	650	779	927	1 098	1 295	-	-
30	445	541	653	782	931	1 103	1 301	1 526	1 783
40	-	541	652	780	929	1 100	1 297	1 522	1 778
50	-	-	-	775	921	1 091	1 286	1 509	1 762
55	-	-	-	-	916	1 084	1 277	1 498	1 750
60	-	-	-	-	-	1 076	1 267	1 486	1 736
65	-	-	-	-	-	-	1 255	1 472	1 720
68	-	-	-	-	-	-	-	-	-

Coefficient of performance (C.O.P.)

20	3.27	3.82	4.48	5.25	6.16	7.25	8.53	-	-
30	2.32	2.79	3.33	3.95	4.67	5.50	6.46	7.58	8.90
40	-	2.02	2.45	2.94	3.50	4.14	4.87	5.71	6.67
50	-	-	-	2.14	2.57	3.05	3.60	4.22	4.94
55	-	-	-	-	2.17	2.58	3.06	3.60	4.21
60	-	-	-	-	-	2.17	2.57	3.04	3.57
65	-	-	-	-	-	-	2.15	2.55	3.01
68	-	-	-	-	-	-	-	-	-

Nominal performance at to = 7.2 °C, tc = 54.4 °C

Cooling capacity	60 150	W
Power input	17 943	W
Current consumption	27.35	A
Mass flow	1 372	kg/h
C.O.P.	3.35	

Pressure switch settings

Maximum HP switch setting	45	bar(g)
Minimum LP switch setting	1.5	bar(g)
LP pump down setting	2.3	bar(g)

Sound power data

Sound power level		dB(A)
With acoustic hood		dB(A)

to: Evaporating temperature at dew point

tc: Condensing temperature at dew point

Rating conditions : Superheat = 11.1 K , Subcooling = 8.3 K

Tolerance according EN12900

Danfoss can accept no responsibility for possible errors in catalogues, brochures and other printed material. Danfoss reserves the right to alter its products without notice. This also applies to products already on order provided that such alternations can be made without subsequential changes being necessary in specifications already agreed. All trademarks in this material are property of the respective companies. Danfoss and the Danfoss logotype are trademarks of Danfoss A/S. All rights reserved.

Performance data at 70 Hz, EN 12900 rating conditions
R410A

Cond. temp. in °C (tc)	Evaporating temperature in °C (to)							
	-25	-20	-15	-10	-5	0	5	10

Cooling capacity in W

20	26 586	31 962	38 518	46 388	55 710	66 617	79 247	-	-
30	23 363	28 559	34 783	42 170	50 856	60 976	72 666	86 061	101 297
40	-	25 515	31 235	37 965	45 843	55 003	65 581	77 713	91 533
50	-	-	-	33 338	40 235	48 262	57 555	68 250	80 482
55	-	-	-	-	37 070	44 466	53 052	62 964	74 337
60	-	-	-	-	-	40 314	48 150	57 236	67 707
65	-	-	-	-	-	-	42 793	51 010	60 535
68	-	-	-	-	-	-	-	-	-

Power input in W

20	8 735	8 992	9 259	9 524	9 775	10 001	10 189	-	-
30	10 914	11 114	11 341	11 583	11 828	12 065	12 280	12 462	12 599
40	-	13 806	13 961	14 148	14 355	14 570	14 780	14 974	15 139
50	-	-	-	17 348	17 484	17 645	17 818	17 991	18 153
55	-	-	-	-	19 315	19 436	19 579	19 729	19 877
60	-	-	-	-	-	21 419	21 522	21 643	21 768
65	-	-	-	-	-	-	23 665	23 747	23 842
68	-	-	-	-	-	-	-	-	-

Current consumption in A

20	22.79	24.70	26.26	27.48	28.37	28.93	29.16	-	-
30	18.85	19.95	20.86	21.60	22.15	22.53	22.74	22.79	22.68
40	-	21.69	21.95	22.19	22.40	22.60	22.78	22.96	23.13
50	-	-	-	26.87	26.74	26.75	26.90	27.20	27.66
55	-	-	-	-	29.69	29.60	29.74	30.10	30.70
60	-	-	-	-	-	32.58	32.70	33.13	33.86
65	-	-	-	-	-	-	35.49	35.97	36.84
68	-	-	-	-	-	-	-	-	-

Mass flow in kg/h

20	479	583	704	844	1 005	1 192	1 406	-	-
30	480	585	706	847	1 009	1 196	1 411	1 656	1 935
40	-	585	706	845	1 007	1 193	1 407	1 651	1 929
50	-	-	-	841	1 000	1 185	1 396	1 638	1 913
55	-	-	-	-	996	1 178	1 388	1 629	1 902
60	-	-	-	-	-	1 171	1 379	1 618	1 889
65	-	-	-	-	-	-	1 369	1 605	1 875
68	-	-	-	-	-	-	-	-	-

Coefficient of performance (C.O.P.)

20	3.04	3.55	4.16	4.87	5.70	6.66	7.78	-	-
30	2.14	2.57	3.07	3.64	4.30	5.05	5.92	6.91	8.04
40	-	1.85	2.24	2.68	3.19	3.78	4.44	5.19	6.05
50	-	-	-	1.92	2.30	2.74	3.23	3.79	4.43
55	-	-	-	-	1.92	2.29	2.71	3.19	3.74
60	-	-	-	-	-	1.88	2.24	2.64	3.11
65	-	-	-	-	-	-	1.81	2.15	2.54
68	-	-	-	-	-	-	-	-	-

Nominal performance at to = 5 °C, tc = 50 °C

Cooling capacity	57 555	W
Power input	17 818	W
Current consumption	26.90	A
Mass flow	1 396	kg/h
C.O.P.	3.23	

Pressure switch settings

Maximum HP switch setting	45	bar(g)
Minimum LP switch setting	1.5	bar(g)
LP pump down setting	2.3	bar(g)

Sound power data

Sound power level		dB(A)
With acoustic hood		dB(A)

to: Evaporating temperature at dew point

tc: Condensing temperature at dew point

Rating conditions : Superheat = 10 K , Subcooling = 0 K

Tolerance according EN12900

Danfoss can accept no responsibility for possible errors in catalogues, brochures and other printed material. Danfoss reserves the right to alter its products without notice. This also applies to products already on order provided that such alternations can be made without subsequential changes being necessary in specifications already agreed. All trademarks in this material are property of the respective companies. Danfoss and the Danfoss logotype are trademarks of Danfoss A/S. All rights reserved.

Performance data at 70 Hz, ARI rating conditions

R410A

Cond. temp. in °C (tc)	Evaporating temperature in °C (to)							
	-25	-20	-15	-10	-5	0	5	10

Cooling capacity in W

20	28 419	34 136	41 104	49 465	59 360	70 931	84 320	-	-
30	25 230	30 809	37 485	45 403	54 706	65 536	78 036	92 350	108 620
40	-	27 913	34 126	41 429	49 968	59 889	71 334	84 450	99 381
50	-	-	-	37 132	44 745	53 596	63 832	75 600	89 049
55	-	-	-	-	41 856	50 120	59 704	70 755	83 424
60	-	-	-	-	-	46 438	55 355	65 680	77 569
65	-	-	-	-	-	-	50 973	60 611	71 772
68	-	-	-	-	-	-	-	-	-

Power input in W

20	8 735	8 992	9 259	9 524	9 775	10 001	10 189	-	-
30	10 914	11 114	11 341	11 583	11 828	12 065	12 280	12 462	12 599
40	-	13 806	13 961	14 148	14 355	14 570	14 780	14 974	15 139
50	-	-	-	17 348	17 484	17 645	17 818	17 991	18 153
55	-	-	-	-	19 315	19 436	19 579	19 729	19 877
60	-	-	-	-	-	21 419	21 522	21 643	21 768
65	-	-	-	-	-	-	23 665	23 747	23 842
68	-	-	-	-	-	-	-	-	-

Current consumption in A

20	22.79	24.70	26.26	27.48	28.37	28.93	29.16	-	-
30	18.85	19.95	20.86	21.60	22.15	22.53	22.74	22.79	22.68
40	-	21.69	21.95	22.19	22.40	22.60	22.78	22.96	23.13
50	-	-	-	26.87	26.74	26.75	26.90	27.20	27.66
55	-	-	-	-	29.69	29.60	29.74	30.10	30.70
60	-	-	-	-	-	32.58	32.70	33.13	33.86
65	-	-	-	-	-	-	35.49	35.97	36.84
68	-	-	-	-	-	-	-	-	-

Mass flow in kg/h

20	476	580	700	839	999	1 184	1 396	-	-
30	477	581	702	841	1 003	1 188	1 401	1 644	1 920
40	-	581	701	840	1 001	1 185	1 397	1 639	1 914
50	-	-	-	836	994	1 177	1 387	1 626	1 899
55	-	-	-	-	989	1 171	1 379	1 617	1 888
60	-	-	-	-	-	1 163	1 370	1 606	1 875
65	-	-	-	-	-	-	1 360	1 594	1 860
68	-	-	-	-	-	-	-	-	-

Coefficient of performance (C.O.P.)

20	3.25	3.80	4.44	5.19	6.07	7.09	8.28	-	-
30	2.31	2.77	3.31	3.92	4.62	5.43	6.35	7.41	8.62
40	-	2.02	2.44	2.93	3.48	4.11	4.83	5.64	6.56
50	-	-	-	2.14	2.56	3.04	3.58	4.20	4.91
55	-	-	-	-	2.17	2.58	3.05	3.59	4.20
60	-	-	-	-	-	2.17	2.57	3.03	3.56
65	-	-	-	-	-	-	2.15	2.55	3.01
68	-	-	-	-	-	-	-	-	-

Nominal performance at to = 7.2 °C, tc = 54.4 °C

Cooling capacity	64 922	W
Power input	19 425	W
Current consumption	29.52	A
Mass flow	1 481	kg/h
C.O.P.	3.34	

Pressure switch settings

Maximum HP switch setting	45	bar(g)
Minimum LP switch setting	1.5	bar(g)
LP pump down setting	2.3	bar(g)

Sound power data

Sound power level		dB(A)
With acoustic hood		dB(A)

to: Evaporating temperature at dew point

tc: Condensing temperature at dew point

Rating conditions : Superheat = 11.1 K , Subcooling = 8.3 K

Tolerance according EN12900

Danfoss can accept no responsibility for possible errors in catalogues, brochures and other printed material. Danfoss reserves the right to alter its products without notice. This also applies to products already on order provided that such alternations can be made without subsequential changes being necessary in specifications already agreed. All trademarks in this material are property of the respective companies. Danfoss and the Danfoss logotype are trademarks of Danfoss A/S. All rights reserved.

Performance data at 75 Hz, EN 12900 rating conditions

R410A

Cond. temp. in °C (tc)	Evaporating temperature in °C (to)							
	-25	-20	-15	-10	-5	0	5	10

Cooling capacity in W

20	28 396	34 193	41 255	49 724	59 746	71 464	85 022	-	-
30	24 911	30 508	37 204	45 142	54 467	65 324	77 855	92 206	108 520
40	-	27 265	33 422	40 656	49 112	58 934	70 265	83 251	98 035
50	-	-	-	35 758	43 171	51 785	61 743	73 191	86 271
55	-	-	-	-	39 822	47 767	56 974	67 588	79 751
60	-	-	-	-	-	43 369	51 782	61 518	72 721
65	-	-	-	-	-	-	46 102	54 917	65 118
68	-	-	-	-	-	-	-	-	-

Power input in W

20	9 383	9 686	10 000	10 318	10 638	10 953	11 259	-	-
30	11 689	11 950	12 225	12 511	12 802	13 094	13 383	13 663	13 929
40	-	14 791	15 009	15 244	15 488	15 739	15 990	16 238	16 478
50	-	-	-	18 647	18 827	19 017	19 213	19 410	19 605
55	-	-	-	-	20 781	20 934	21 096	21 261	21 426
60	-	-	-	-	-	23 059	23 181	23 309	23 440
65	-	-	-	-	-	-	25 486	25 572	25 663
68	-	-	-	-	-	-	-	-	-

Current consumption in A

20	23.78	25.72	27.32	28.57	29.51	30.14	30.47	-	-
30	20.05	21.23	22.19	22.96	23.56	23.98	24.26	24.39	24.40
40	-	23.16	23.51	23.81	24.07	24.31	24.54	24.77	25.02
50	-	-	-	28.75	28.70	28.77	28.96	29.30	29.80
55	-	-	-	-	31.81	31.80	31.98	32.39	33.02
60	-	-	-	-	-	34.97	35.15	35.62	36.38
65	-	-	-	-	-	-	38.17	38.71	39.61
68	-	-	-	-	-	-	-	-	-

Mass flow in kg/h

20	511	624	754	904	1 078	1 279	1 509	-	-
30	511	625	755	906	1 081	1 281	1 511	1 774	2 073
40	-	625	755	905	1 079	1 278	1 507	1 769	2 066
50	-	-	-	902	1 073	1 271	1 498	1 757	2 051
55	-	-	-	-	1 070	1 266	1 491	1 748	2 041
60	-	-	-	-	-	1 260	1 483	1 739	2 029
65	-	-	-	-	-	-	1 475	1 728	2 016
68	-	-	-	-	-	-	-	-	-

Coefficient of performance (C.O.P.)

20	3.03	3.53	4.13	4.82	5.62	6.52	7.55	-	-
30	2.13	2.55	3.04	3.61	4.25	4.99	5.82	6.75	7.79
40	-	1.84	2.23	2.67	3.17	3.74	4.39	5.13	5.95
50	-	-	-	1.92	2.29	2.72	3.21	3.77	4.40
55	-	-	-	-	1.92	2.28	2.70	3.18	3.72
60	-	-	-	-	-	1.88	2.23	2.64	3.10
65	-	-	-	-	-	-	1.81	2.15	2.54
68	-	-	-	-	-	-	-	-	-

Nominal performance at to = 5 °C, tc = 50 °C

Cooling capacity	61 743	W
Power input	19 213	W
Current consumption	28.96	A
Mass flow	1 498	kg/h
C.O.P.	3.21	

Pressure switch settings

Maximum HP switch setting	45	bar(g)
Minimum LP switch setting	1.5	bar(g)
LP pump down setting	2.3	bar(g)

Sound power data

Sound power level		dB(A)
With acoustic hood		dB(A)

to: Evaporating temperature at dew point

tc: Condensing temperature at dew point

Rating conditions : Superheat = 10 K, Subcooling = 0 K

Tolerance according EN12900

Danfoss can accept no responsibility for possible errors in catalogues, brochures and other printed material. Danfoss reserves the right to alter its products without notice. This also applies to products already on order provided that such alternations can be made without subsequential changes being necessary in specifications already agreed. All trademarks in this material are property of the respective companies. Danfoss and the Danfoss logotype are trademarks of Danfoss A/S. All rights reserved.

Performance data at 75 Hz, ARI rating conditions
R410A

Cond. temp. in °C (tc)	Evaporating temperature in °C (to)							
	-25	-20	-15	-10	-5	0	5	10

Cooling capacity in W

20	30 353	36 520	44 025	53 022	63 661	76 091	90 465	-	-
30	26 902	32 912	40 095	48 604	58 591	70 209	83 609	98 944	116 365
40	-	29 827	36 515	44 365	53 531	64 168	76 429	90 469	106 440
50	-	-	-	39 828	48 011	57 508	68 476	81 073	95 454
55	-	-	-	-	44 963	53 841	64 117	75 950	89 500
60	-	-	-	-	-	49 958	59 529	70 594	83 314
65	-	-	-	-	-	-	54 914	65 254	77 205
68	-	-	-	-	-	-	-	-	-

Power input in W

20	9 383	9 686	10 000	10 318	10 638	10 953	11 259	-	-
30	11 689	11 950	12 225	12 511	12 802	13 094	13 383	13 663	13 929
40	-	14 791	15 009	15 244	15 488	15 739	15 990	16 238	16 478
50	-	-	-	18 647	18 827	19 017	19 213	19 410	19 605
55	-	-	-	-	20 781	20 934	21 096	21 261	21 426
60	-	-	-	-	-	23 059	23 181	23 309	23 440
65	-	-	-	-	-	-	25 486	25 572	25 663
68	-	-	-	-	-	-	-	-	-

Current consumption in A

20	23.78	25.72	27.32	28.57	29.51	30.14	30.47	-	-
30	20.05	21.23	22.19	22.96	23.56	23.98	24.26	24.39	24.40
40	-	23.16	23.51	23.81	24.07	24.31	24.54	24.77	25.02
50	-	-	-	28.75	28.70	28.77	28.96	29.30	29.80
55	-	-	-	-	31.81	31.80	31.98	32.39	33.02
60	-	-	-	-	-	34.97	35.15	35.62	36.38
65	-	-	-	-	-	-	38.17	38.71	39.61
68	-	-	-	-	-	-	-	-	-

Mass flow in kg/h

20	508	620	749	898	1 071	1 270	1 498	-	-
30	508	621	751	901	1 074	1 273	1 501	1 761	2 057
40	-	621	751	900	1 072	1 270	1 497	1 756	2 050
50	-	-	-	896	1 067	1 263	1 487	1 744	2 036
55	-	-	-	-	1 063	1 257	1 481	1 736	2 026
60	-	-	-	-	-	1 252	1 473	1 726	2 014
65	-	-	-	-	-	-	1 465	1 716	2 001
68	-	-	-	-	-	-	-	-	-

Coefficient of performance (C.O.P.)

20	3.23	3.77	4.40	5.14	5.98	6.95	8.03	-	-
30	2.30	2.75	3.28	3.88	4.58	5.36	6.25	7.24	8.35
40	-	2.02	2.43	2.91	3.46	4.08	4.78	5.57	6.46
50	-	-	-	2.14	2.55	3.02	3.56	4.18	4.87
55	-	-	-	-	2.16	2.57	3.04	3.57	4.18
60	-	-	-	-	-	2.17	2.57	3.03	3.55
65	-	-	-	-	-	-	2.15	2.55	3.01
68	-	-	-	-	-	-	-	-	-

Nominal performance at to = 7.2 °C, tc = 54.4 °C

Cooling capacity	69 699	W
Power input	20 934	W
Current consumption	31.76	A
Mass flow	1 590	kg/h
C.O.P.	3.33	

Pressure switch settings

Maximum HP switch setting	45	bar(g)
Minimum LP switch setting	1.5	bar(g)
LP pump down setting	2.3	bar(g)

Sound power data

Sound power level		dB(A)
With acoustic hood		dB(A)

to: Evaporating temperature at dew point

tc: Condensing temperature at dew point

Rating conditions : Superheat = 11.1 K , Subcooling = 8.3 K

Tolerance according EN12900

Danfoss can accept no responsibility for possible errors in catalogues, brochures and other printed material. Danfoss reserves the right to alter its products without notice. This also applies to products already on order provided that such alternations can be made without subsequential changes being necessary in specifications already agreed. All trademarks in this material are property of the respective companies. Danfoss and the Danfoss logotype are trademarks of Danfoss A/S. All rights reserved.

Performance data at 80 Hz, EN 12900 rating conditions

R410A

Cond. temp. in °C (tc)	Evaporating temperature in °C (to)							
	-25	-20	-15	-10	-5	0	5	10

Cooling capacity in W

20	30 180	36 409	43 986	53 062	63 791	76 325	90 816	-	-
30	26 426	32 432	39 607	48 103	58 072	69 667	83 041	98 345	115 732
40	-	28 987	35 589	43 332	52 370	62 855	74 940	88 776	104 517
50	-	-	-	38 166	46 102	55 305	65 929	78 126	92 049
55	-	-	-	-	42 573	51 071	60 900	72 213	85 162
60	-	-	-	-	-	46 433	55 425	65 811	77 744
65	-	-	-	-	-	-	49 430	58 847	69 720
68	-	-	-	-	-	-	-	-	-

Power input in W

20	10 036	10 389	10 752	11 128	11 522	11 936	12 376	-	-
30	12 470	12 795	13 122	13 455	13 795	14 149	14 519	14 908	15 322
40	-	15 783	16 071	16 355	16 640	16 929	17 226	17 534	17 858
50	-	-	-	19 965	20 190	20 412	20 632	20 856	21 086
55	-	-	-	-	22 272	22 458	22 639	22 819	23 001
60	-	-	-	-	-	24 730	24 871	25 006	25 140
65	-	-	-	-	-	-	27 345	27 435	27 519
68	-	-	-	-	-	-	-	-	-

Current consumption in A

20	24.62	26.55	28.13	29.40	30.38	31.08	31.54	-	-
30	21.28	22.49	23.49	24.29	24.92	25.40	25.74	25.99	26.15
40	-	24.66	25.11	25.48	25.79	26.08	26.35	26.64	26.97
50	-	-	-	30.69	30.73	30.85	31.09	31.46	31.99
55	-	-	-	-	34.00	34.07	34.30	34.72	35.37
60	-	-	-	-	-	37.45	37.69	38.18	38.95
65	-	-	-	-	-	-	40.98	41.54	42.44
68	-	-	-	-	-	-	-	-	-

Mass flow in kg/h

20	542	663	803	964	1 151	1 365	1 612	-	-
30	542	664	804	966	1 152	1 367	1 612	1 892	2 210
40	-	664	804	965	1 150	1 364	1 608	1 886	2 202
50	-	-	-	963	1 146	1 357	1 599	1 875	2 188
55	-	-	-	-	1 144	1 353	1 594	1 868	2 180
60	-	-	-	-	-	1 349	1 588	1 860	2 170
65	-	-	-	-	-	-	1 581	1 852	2 159
68	-	-	-	-	-	-	-	-	-

Coefficient of performance (C.O.P.)

20	3.01	3.50	4.09	4.77	5.54	6.39	7.34	-	-
30	2.12	2.53	3.02	3.58	4.21	4.92	5.72	6.60	7.55
40	-	1.84	2.21	2.65	3.15	3.71	4.35	5.06	5.85
50	-	-	-	1.91	2.28	2.71	3.20	3.75	4.37
55	-	-	-	-	1.91	2.27	2.69	3.16	3.70
60	-	-	-	-	-	1.88	2.23	2.63	3.09
65	-	-	-	-	-	-	1.81	2.14	2.53
68	-	-	-	-	-	-	-	-	-

Nominal performance at to = 5 °C, tc = 50 °C

Cooling capacity	65 929	W
Power input	20 632	W
Current consumption	31.09	A
Mass flow	1 599	kg/h
C.O.P.	3.20	

Pressure switch settings

Maximum HP switch setting	45	bar(g)
Minimum LP switch setting	1.5	bar(g)
LP pump down setting	2.3	bar(g)

Sound power data

Sound power level		dB(A)
With acoustic hood		dB(A)

to: Evaporating temperature at dew point

tc: Condensing temperature at dew point

Rating conditions : Superheat = 10 K, Subcooling = 0 K

Tolerance according EN12900

Danfoss can accept no responsibility for possible errors in catalogues, brochures and other printed material. Danfoss reserves the right to alter its products without notice. This also applies to products already on order provided that such alternations can be made without subsequential changes being necessary in specifications already agreed. All trademarks in this material are property of the respective companies. Danfoss and the Danfoss logotype are trademarks of Danfoss A/S. All rights reserved.

Performance data at 80 Hz, ARI rating conditions

R410A

Cond. temp. in °C (tc)	Evaporating temperature in °C (to)							
	-25	-20	-15	-10	-5	0	5	10

Cooling capacity in W

20	32 261	38 886	46 940	56 581	67 971	81 267	96 630	-	-
30	28 539	34 988	42 685	51 791	62 469	74 877	89 178	105 531	124 098
40	-	31 711	38 883	47 286	57 083	68 438	81 514	96 473	113 478
50	-	-	-	42 511	51 270	61 418	73 119	86 540	101 846
55	-	-	-	-	48 069	57 565	68 535	81 148	95 572
60	-	-	-	-	-	53 487	63 718	75 521	89 068
65	-	-	-	-	-	-	58 879	69 924	82 662
68	-	-	-	-	-	-	-	-	-

Power input in W

20	10 036	10 389	10 752	11 128	11 522	11 936	12 376	-	-
30	12 470	12 795	13 122	13 455	13 795	14 149	14 519	14 908	15 322
40	-	15 783	16 071	16 355	16 640	16 929	17 226	17 534	17 858
50	-	-	-	19 965	20 190	20 412	20 632	20 856	21 086
55	-	-	-	-	22 272	22 458	22 639	22 819	23 001
60	-	-	-	-	-	24 730	24 871	25 006	25 140
65	-	-	-	-	-	-	27 345	27 435	27 519
68	-	-	-	-	-	-	-	-	-

Current consumption in A

20	24.62	26.55	28.13	29.40	30.38	31.08	31.54	-	-
30	21.28	22.49	23.49	24.29	24.92	25.40	25.74	25.99	26.15
40	-	24.66	25.11	25.48	25.79	26.08	26.35	26.64	26.97
50	-	-	-	30.69	30.73	30.85	31.09	31.46	31.99
55	-	-	-	-	34.00	34.07	34.30	34.72	35.37
60	-	-	-	-	-	37.45	37.69	38.18	38.95
65	-	-	-	-	-	-	40.98	41.54	42.44
68	-	-	-	-	-	-	-	-	-

Mass flow in kg/h

20	539	659	798	958	1 143	1 356	1 600	-	-
30	539	660	799	960	1 145	1 357	1 601	1 879	2 194
40	-	660	799	959	1 143	1 355	1 597	1 873	2 186
50	-	-	-	957	1 139	1 348	1 588	1 862	2 172
55	-	-	-	-	1 136	1 344	1 583	1 855	2 163
60	-	-	-	-	-	1 340	1 577	1 847	2 153
65	-	-	-	-	-	-	1 570	1 838	2 143
68	-	-	-	-	-	-	-	-	-

Coefficient of performance (C.O.P.)

20	3.21	3.74	4.37	5.08	5.90	6.81	7.81	-	-
30	2.29	2.73	3.25	3.85	4.53	5.29	6.14	7.08	8.10
40	-	2.01	2.42	2.89	3.43	4.04	4.73	5.50	6.35
50	-	-	-	2.13	2.54	3.01	3.54	4.15	4.83
55	-	-	-	-	2.16	2.56	3.03	3.56	4.16
60	-	-	-	-	-	2.16	2.56	3.02	3.54
65	-	-	-	-	-	-	2.15	2.55	3.00
68	-	-	-	-	-	-	-	-	-

Nominal performance at to = 7.2 °C, tc = 54.4 °C

Cooling capacity	74 479	W
Power input	22 468	W
Current consumption	34.06	A
Mass flow	1 699	kg/h
C.O.P.	3.31	

Pressure switch settings

Maximum HP switch setting	45	bar(g)
Minimum LP switch setting	1.5	bar(g)
LP pump down setting	2.3	bar(g)

Sound power data

Sound power level		dB(A)
With acoustic hood		dB(A)

to: Evaporating temperature at dew point

tc: Condensing temperature at dew point

Rating conditions : Superheat = 11.1 K , Subcooling = 8.3 K

Tolerance according EN12900

Danfoss can accept no responsibility for possible errors in catalogues, brochures and other printed material. Danfoss reserves the right to alter its products without notice. This also applies to products already on order provided that such alternations can be made without subsequential changes being necessary in specifications already agreed. All trademarks in this material are property of the respective companies. Danfoss and the Danfoss logotype are trademarks of Danfoss A/S. All rights reserved.

Performance data at 85 Hz, EN 12900 rating conditions
R410A

Cond. temp. in °C (tc)	Evaporating temperature in °C (to)							
	-25	-20	-15	-10	-5	0	5	10

Cooling capacity in W

20	31 939	38 609	46 710	56 402	67 845	81 200	96 627	-	-
30	27 908	34 331	41 992	51 052	61 669	74 006	88 222	104 478	122 934
40	-	30 681	37 735	45 994	55 618	66 769	79 605	94 289	110 980
50	-	-	-	40 564	49 027	58 823	70 113	83 057	97 815
55	-	-	-	-	45 321	54 378	64 831	76 842	90 571
60	-	-	-	-	-	49 506	59 081	70 117	82 774
65	-	-	-	-	-	-	52 780	62 799	74 343
68	-	-	-	-	-	-	-	-	-

Power input in W

20	10 695	11 100	11 515	11 953	12 427	12 951	13 537	-	-
30	13 255	13 651	14 033	14 414	14 808	15 229	15 688	16 199	16 775
40	-	16 782	17 145	17 484	17 812	18 142	18 487	18 861	19 277
50	-	-	-	21 301	21 576	21 830	22 076	22 326	22 595
55	-	-	-	-	23 787	24 008	24 209	24 403	24 604
60	-	-	-	-	-	26 433	26 592	26 733	26 869
65	-	-	-	-	-	-	29 242	29 333	29 407
68	-	-	-	-	-	-	-	-	-

Current consumption in A

20	25.30	27.17	28.71	29.96	30.97	31.75	32.36	-	-
30	22.51	23.76	24.77	25.59	26.24	26.76	27.20	27.57	27.92
40	-	26.21	26.76	27.19	27.56	27.88	28.21	28.56	28.98
50	-	-	-	32.68	32.82	33.00	33.28	33.67	34.22
55	-	-	-	-	36.26	36.41	36.68	37.12	37.76
60	-	-	-	-	-	40.02	40.31	40.81	41.55
65	-	-	-	-	-	-	43.91	44.48	45.34
68	-	-	-	-	-	-	-	-	-

Mass flow in kg/h

20	573	703	852	1 025	1 223	1 452	1 715	-	-
30	573	703	853	1 025	1 224	1 452	1 713	2 010	2 348
40	-	703	853	1 024	1 222	1 448	1 708	2 003	2 338
50	-	-	-	1 023	1 219	1 444	1 701	1 994	2 326
55	-	-	-	-	1 218	1 441	1 697	1 988	2 318
60	-	-	-	-	-	1 438	1 693	1 982	2 310
65	-	-	-	-	-	-	1 688	1 976	2 302
68	-	-	-	-	-	-	-	-	-

Coefficient of performance (C.O.P.)

20	2.99	3.48	4.06	4.72	5.46	6.27	7.14	-	-
30	2.11	2.52	2.99	3.54	4.16	4.86	5.62	6.45	7.33
40	-	1.83	2.20	2.63	3.12	3.68	4.31	5.00	5.76
50	-	-	-	1.90	2.27	2.69	3.18	3.72	4.33
55	-	-	-	-	1.91	2.26	2.68	3.15	3.68
60	-	-	-	-	-	1.87	2.22	2.62	3.08
65	-	-	-	-	-	-	1.80	2.14	2.53
68	-	-	-	-	-	-	-	-	-

Nominal performance at to = 5 °C, tc = 50 °C

Cooling capacity	70 113	W
Power input	22 076	W
Current consumption	33.28	A
Mass flow	1 701	kg/h
C.O.P.	3.18	

Pressure switch settings

Maximum HP switch setting	45	bar(g)
Minimum LP switch setting	1.5	bar(g)
LP pump down setting	2.3	bar(g)

Sound power data

Sound power level		dB(A)
With acoustic hood		dB(A)

to: Evaporating temperature at dew point

tc: Condensing temperature at dew point

Rating conditions : Superheat = 10 K , Subcooling = 0 K

Tolerance according EN12900

Danfoss can accept no responsibility for possible errors in catalogues, brochures and other printed material. Danfoss reserves the right to alter its products without notice. This also applies to products already on order provided that such alternations can be made without subsequential changes being necessary in specifications already agreed. All trademarks in this material are property of the respective companies. Danfoss and the Danfoss logotype are trademarks of Danfoss A/S. All rights reserved.

Performance data at 85 Hz, ARI rating conditions
R410A

Cond. temp. in °C (tc)	Evaporating temperature in °C (to)								
	-25	-20	-15	-10	-5	0	5	10	15

Cooling capacity in W

20	34 141	41 236	49 847	60 142	72 290	86 458	102 813	-	-
30	30 139	37 036	45 256	54 966	66 338	79 540	94 742	112 112	131 820
40	-	33 564	41 228	50 190	60 623	72 699	86 589	102 464	120 495
50	-	-	-	45 181	54 524	65 325	77 759	92 001	108 226
55	-	-	-	-	51 172	61 292	72 959	86 350	101 641
60	-	-	-	-	-	57 027	67 921	80 462	94 831
65	-	-	-	-	-	-	62 868	74 620	88 143
68	-	-	-	-	-	-	-	-	-

Power input in W

20	10 695	11 100	11 515	11 953	12 427	12 951	13 537	-	-
30	13 255	13 651	14 033	14 414	14 808	15 229	15 688	16 199	16 775
40	-	16 782	17 145	17 484	17 812	18 142	18 487	18 861	19 277
50	-	-	-	21 301	21 576	21 830	22 076	22 326	22 595
55	-	-	-	-	23 787	24 008	24 209	24 403	24 604
60	-	-	-	-	-	26 433	26 592	26 733	26 869
65	-	-	-	-	-	-	29 242	29 333	29 407
68	-	-	-	-	-	-	-	-	-

Current consumption in A

20	25.30	27.17	28.71	29.96	30.97	31.75	32.36	-	-
30	22.51	23.76	24.77	25.59	26.24	26.76	27.20	27.57	27.92
40	-	26.21	26.76	27.19	27.56	27.88	28.21	28.56	28.98
50	-	-	-	32.68	32.82	33.00	33.28	33.67	34.22
55	-	-	-	-	36.26	36.41	36.68	37.12	37.76
60	-	-	-	-	-	40.02	40.31	40.81	41.55
65	-	-	-	-	-	-	43.91	44.48	45.34
68	-	-	-	-	-	-	-	-	-

Mass flow in kg/h

20	570	699	847	1 018	1 216	1 443	1 703	-	-
30	570	699	848	1 019	1 216	1 442	1 701	1 996	2 330
40	-	699	847	1 018	1 214	1 439	1 696	1 989	2 321
50	-	-	-	1 017	1 211	1 434	1 689	1 979	2 308
55	-	-	-	-	1 210	1 432	1 685	1 974	2 301
60	-	-	-	-	-	1 429	1 681	1 968	2 293
65	-	-	-	-	-	-	1 677	1 962	2 285
68	-	-	-	-	-	-	-	-	-

Coefficient of performance (C.O.P.)

20	3.19	3.72	4.33	5.03	5.82	6.68	7.59	-	-
30	2.27	2.71	3.23	3.81	4.48	5.22	6.04	6.92	7.86
40	-	2.00	2.40	2.87	3.40	4.01	4.68	5.43	6.25
50	-	-	-	2.12	2.53	2.99	3.52	4.12	4.79
55	-	-	-	-	2.15	2.55	3.01	3.54	4.13
60	-	-	-	-	-	2.16	2.55	3.01	3.53
65	-	-	-	-	-	-	2.15	2.54	3.00
68	-	-	-	-	-	-	-	-	-

Nominal performance at to = 7.2 °C, tc = 54.4 °C

Cooling capacity	79 262	W
Power input	24 029	W
Current consumption	36.42	A
Mass flow	1 808	kg/h
C.O.P.	3.30	

Pressure switch settings

Maximum HP switch setting	45	bar(g)
Minimum LP switch setting	1.5	bar(g)
LP pump down setting	2.3	bar(g)

Sound power data

Sound power level		dB(A)
With acoustic hood		dB(A)

to: Evaporating temperature at dew point

tc: Condensing temperature at dew point

Rating conditions : Superheat = 11.1 K , Subcooling = 8.3 K

Tolerance according EN12900

Danfoss can accept no responsibility for possible errors in catalogues, brochures and other printed material. Danfoss reserves the right to alter its products without notice. This also applies to products already on order provided that such alternations can be made without subsequential changes being necessary in specifications already agreed. All trademarks in this material are property of the respective companies. Danfoss and the Danfoss logotype are trademarks of Danfoss A/S. All rights reserved.

Performance data at 90 Hz, EN 12900 rating conditions

R410A

Cond. temp. in °C (tc)	Evaporating temperature in °C (to)							
	-25	-20	-15	-10	-5	0	5	10

Cooling capacity in W

20	33 673	40 793	49 427	59 742	71 907	86 089	102 456	-	-
30	29 357	36 205	44 360	53 988	65 259	78 340	93 399	110 604	130 124
40	-	32 347	39 861	48 641	58 856	70 673	84 262	99 789	117 424
50	-	-	-	42 949	51 947	62 339	74 295	87 983	103 570
55	-	-	-	-	48 068	57 687	68 766	81 473	95 976
60	-	-	-	-	-	52 587	62 749	74 435	87 813
65	-	-	-	-	-	-	56 149	66 773	78 986
68	-	-	-	-	-	-	-	-	-

Power input in W

20	11 359	11 818	12 288	12 793	13 354	13 997	14 745	-	-
30	14 046	14 515	14 956	15 390	15 841	16 333	16 890	17 534	18 290
40	-	17 790	18 232	18 628	19 002	19 376	19 774	20 220	20 736
50	-	-	-	22 656	22 983	23 271	23 543	23 823	24 133
55	-	-	-	-	25 328	25 585	25 806	26 014	26 233
60	-	-	-	-	-	28 167	28 345	28 490	28 626
65	-	-	-	-	-	-	31 178	31 269	31 330
68	-	-	-	-	-	-	-	-	-

Current consumption in A

20	25.83	27.58	29.04	30.26	31.28	32.15	32.92	-	-
30	23.77	25.02	26.03	26.85	27.52	28.09	28.62	29.14	29.71
40	-	27.79	28.44	28.96	29.37	29.74	30.11	30.53	31.04
50	-	-	-	34.72	34.97	35.23	35.53	35.94	36.49
55	-	-	-	-	38.59	38.83	39.14	39.57	40.18
60	-	-	-	-	-	42.69	43.02	43.51	44.20
65	-	-	-	-	-	-	46.96	47.52	48.31
68	-	-	-	-	-	-	-	-	-

Mass flow in kg/h

20	604	742	901	1 085	1 296	1 540	1 818	-	-
30	603	742	901	1 084	1 295	1 537	1 813	2 128	2 485
40	-	741	901	1 083	1 293	1 533	1 808	2 120	2 474
50	-	-	-	1 083	1 292	1 530	1 802	2 112	2 462
55	-	-	-	-	1 291	1 529	1 800	2 108	2 457
60	-	-	-	-	-	1 528	1 798	2 104	2 451
65	-	-	-	-	-	-	1 796	2 101	2 446
68	-	-	-	-	-	-	-	-	-

Coefficient of performance (C.O.P.)

20	2.96	3.45	4.02	4.67	5.38	6.15	6.95	-	-
30	2.09	2.49	2.97	3.51	4.12	4.80	5.53	6.31	7.11
40	-	1.82	2.19	2.61	3.10	3.65	4.26	4.94	5.66
50	-	-	-	1.90	2.26	2.68	3.16	3.69	4.29
55	-	-	-	-	1.90	2.25	2.66	3.13	3.66
60	-	-	-	-	-	1.87	2.21	2.61	3.07
65	-	-	-	-	-	-	1.80	2.14	2.52
68	-	-	-	-	-	-	-	-	-

Nominal performance at to = 5 °C, tc = 50 °C

Cooling capacity	74 295	W
Power input	23 543	W
Current consumption	35.53	A
Mass flow	1 802	kg/h
C.O.P.	3.16	

Pressure switch settings

Maximum HP switch setting	45	bar(g)
Minimum LP switch setting	1.5	bar(g)
LP pump down setting	2.3	bar(g)

Sound power data

Sound power level	94	dB(A)
With acoustic hood	89	dB(A)

to: Evaporating temperature at dew point

tc: Condensing temperature at dew point

Rating conditions : Superheat = 10 K , Subcooling = 0 K

Tolerance according EN12900

Danfoss can accept no responsibility for possible errors in catalogues, brochures and other printed material. Danfoss reserves the right to alter its products without notice. This also applies to products already on order provided that such alternations can be made without subsequential changes being necessary in specifications already agreed. All trademarks in this material are property of the respective companies. Danfoss and the Danfoss logotype are trademarks of Danfoss A/S. All rights reserved.

Performance data at 90 Hz, ARI rating conditions
R410A

Cond. temp. in °C (tc)	Evaporating temperature in °C (to)							
	-25	-20	-15	-10	-5	0	5	10

Cooling capacity in W

20	35 995	43 568	52 746	63 704	76 618	91 663	109 015	-	-
30	31 703	39 058	47 807	58 128	70 200	84 198	100 302	118 687	139 530
40	-	35 387	43 550	53 078	64 152	76 951	91 654	108 441	127 492
50	-	-	-	47 838	57 770	69 229	82 397	97 458	114 594
55	-	-	-	-	54 273	65 023	77 388	91 554	107 708
60	-	-	-	-	-	60 576	72 138	85 417	100 604
65	-	-	-	-	-	-	66 882	79 342	93 648
68	-	-	-	-	-	-	-	-	-

Power input in W

20	11 359	11 818	12 288	12 793	13 354	13 997	14 745	-	-
30	14 046	14 515	14 956	15 390	15 841	16 333	16 890	17 534	18 290
40	-	17 790	18 232	18 628	19 002	19 376	19 774	20 220	20 736
50	-	-	-	22 656	22 983	23 271	23 543	23 823	24 133
55	-	-	-	-	25 328	25 585	25 806	26 014	26 233
60	-	-	-	-	-	28 167	28 345	28 490	28 626
65	-	-	-	-	-	-	31 178	31 269	31 330
68	-	-	-	-	-	-	-	-	-

Current consumption in A

20	25.83	27.58	29.04	30.26	31.28	32.15	32.92	-	-
30	23.77	25.02	26.03	26.85	27.52	28.09	28.62	29.14	29.71
40	-	27.79	28.44	28.96	29.37	29.74	30.11	30.53	31.04
50	-	-	-	34.72	34.97	35.23	35.53	35.94	36.49
55	-	-	-	-	38.59	38.83	39.14	39.57	40.18
60	-	-	-	-	-	42.69	43.02	43.51	44.20
65	-	-	-	-	-	-	46.96	47.52	48.31
68	-	-	-	-	-	-	-	-	-

Mass flow in kg/h

20	600	738	896	1 078	1 288	1 530	1 806	-	-
30	599	737	895	1 077	1 286	1 526	1 801	2 113	2 467
40	-	737	895	1 076	1 285	1 523	1 795	2 105	2 455
50	-	-	-	1 076	1 283	1 520	1 790	2 097	2 444
55	-	-	-	-	1 283	1 519	1 787	2 093	2 438
60	-	-	-	-	-	1 518	1 785	2 089	2 433
65	-	-	-	-	-	-	1 783	2 086	2 427
68	-	-	-	-	-	-	-	-	-

Coefficient of performance (C.O.P.)

20	3.17	3.69	4.29	4.98	5.74	6.55	7.39	-	-
30	2.26	2.69	3.20	3.78	4.43	5.16	5.94	6.77	7.63
40	-	1.99	2.39	2.85	3.38	3.97	4.64	5.36	6.15
50	-	-	-	2.11	2.51	2.97	3.50	4.09	4.75
55	-	-	-	-	2.14	2.54	3.00	3.52	4.11
60	-	-	-	-	-	2.15	2.55	3.00	3.51
65	-	-	-	-	-	-	2.15	2.54	2.99
68	-	-	-	-	-	-	-	-	-

Nominal performance at to = 7.2 °C, tc = 54.4 °C

Cooling capacity	84 049	W
Power input	25 615	W
Current consumption	38.86	A
Mass flow	1 917	kg/h
C.O.P.	3.28	

Pressure switch settings

Maximum HP switch setting	45	bar(g)
Minimum LP switch setting	1.5	bar(g)
LP pump down setting	2.3	bar(g)

Sound power data

Sound power level	94	dB(A)
With acoustic hood	89	dB(A)

to: Evaporating temperature at dew point

tc: Condensing temperature at dew point

Rating conditions : Superheat = 11.1 K , Subcooling = 8.3 K

Tolerance according EN12900

Danfoss can accept no responsibility for possible errors in catalogues, brochures and other printed material. Danfoss reserves the right to alter its products without notice. This also applies to products already on order provided that such alternations can be made without subsequential changes being necessary in specifications already agreed. All trademarks in this material are property of the respective companies. Danfoss and the Danfoss logotype are trademarks of Danfoss A/S. All rights reserved.

Performance data at 95 Hz, EN 12900 rating conditions
R410A

Cond. temp. in °C (tc)	Evaporating temperature in °C (to)							
	-20	-15	-10	-5	0	5	10	15

Cooling capacity in W

20	-	42 962	52 138	63 085	75 978	90 992	108 304	-	-
25	-	40 351	49 286	59 880	72 310	86 751	103 377	122 364	-
30	-	38 054	46 709	56 914	68 842	82 670	98 572	116 725	137 303
40	-	33 986	41 966	51 274	62 083	74 570	88 910	105 277	123 849
45	-	-	39 589	48 390	58 582	70 341	83 841	99 259	116 769
50	-	-	-	45 324	54 861	65 853	78 475	92 904	109 314
55	-	-	-	-	50 813	61 000	72 706	86 108	101 380
60	-	-	-	-	-	-	-	78 765	92 860

Power input in W

20	-	12 545	13 073	13 647	14 303	15 075	15 998	-	-
25	-	13 906	14 414	14 940	15 517	16 181	16 967	17 910	-
30	-	15 390	15 892	16 381	16 893	17 463	18 125	18 915	19 867
40	-	18 804	19 332	19 790	20 211	20 631	21 086	21 609	22 236
45	-	-	21 335	21 796	22 191	22 557	22 927	23 337	23 821
50	-	-	-	24 029	24 412	24 736	25 035	25 344	25 699
55	-	-	-	-	26 893	27 188	27 429	27 651	27 889
60	-	-	-	-	-	-	-	30 277	30 412

Current consumption in A

20	-	27.80	29.14	30.29	31.32	32.28	33.25	-	-
25	-	26.36	27.51	28.47	29.31	30.08	30.87	31.71	-
30	-	26.28	27.27	28.07	28.75	29.38	30.00	30.70	31.53
40	-	29.41	30.18	30.76	31.23	31.64	32.06	32.55	33.17
45	-	-	32.94	33.47	33.87	34.22	34.59	35.02	35.59
50	-	-	-	36.81	37.19	37.52	37.85	38.26	38.81
55	-	-	-	-	40.99	41.32	41.66	42.08	42.64
60	-	-	-	-	-	-	-	46.28	46.88

Mass flow in kg/h

20	-	781	950	1 145	1 370	1 627	1 922	-	-
25	-	780	949	1 144	1 367	1 624	1 918	2 252	-
30	-	779	948	1 143	1 366	1 622	1 914	2 246	2 623
40	-	779	948	1 142	1 364	1 618	1 907	2 237	2 609
45	-	-	949	1 142	1 364	1 617	1 905	2 233	2 604
50	-	-	-	1 143	1 364	1 616	1 904	2 230	2 599
55	-	-	-	-	1 365	1 617	1 903	2 228	2 595
60	-	-	-	-	-	-	-	2 227	2 592

Coefficient of performance (C.O.P.)

20	-	3.42	3.99	4.62	5.31	6.04	6.77	-	-
25	-	2.90	3.42	4.01	4.66	5.36	6.09	6.83	-
30	-	2.47	2.94	3.47	4.08	4.73	5.44	6.17	6.91
40	-	1.81	2.17	2.59	3.07	3.61	4.22	4.87	5.57
45	-	-	1.86	2.22	2.64	3.12	3.66	4.25	4.90
50	-	-	-	1.89	2.25	2.66	3.13	3.67	4.25
55	-	-	-	-	1.89	2.24	2.65	3.11	3.64
60	-	-	-	-	-	-	-	2.60	3.05

Nominal performance at to = 5 °C, tc = 50 °C

Cooling capacity	78 475	W
Power input	25 035	W
Current consumption	37.85	A
Mass flow	1 904	kg/h
C.O.P.	3.13	

Pressure switch settings

Maximum HP switch setting	45	bar(g)
Minimum LP switch setting	1.5	bar(g)
LP pump down setting	2.3	bar(g)

Sound power data

Sound power level		dB(A)
With acoustic hood		dB(A)

to: Evaporating temperature at dew point

tc: Condensing temperature at dew point

Rating conditions : Superheat = 10 K , Subcooling = 0 K

Tolerance according EN12900

Danfoss can accept no responsibility for possible errors in catalogues, brochures and other printed material. Danfoss reserves the right to alter its products without notice. This also applies to products already on order provided that such alternations can be made without subsequential changes being necessary in specifications already agreed. All trademarks in this material are property of the respective companies. Danfoss and the Danfoss logotype are trademarks of Danfoss A/S. All rights reserved.

Performance data at 95 Hz, ARI rating conditions

R410A

Cond. temp. in °C (tc)	Evaporating temperature in °C (to)							
	-20	-15	-10	-5	0	5	10	15

Cooling capacity in W

20	-	45 885	55 639	67 269	80 956	96 884	115 237	-	-
25	-	43 296	52 836	64 138	77 388	92 770	110 468	130 664	-
30	-	41 053	50 339	61 278	74 054	88 852	105 857	125 255	147 228
40	-	37 179	45 850	55 951	67 670	81 193	96 709	114 405	134 467
45	-	-	43 652	53 282	64 421	77 256	91 979	108 777	127 839
50	-	-	-	50 483	61 011	73 131	87 033	102 909	120 949
55	-	-	-	-	57 373	68 757	81 821	96 762	113 772
60	-	-	-	-	-	-	-	90 386	106 386

Power input in W

20	-	12 545	13 073	13 647	14 303	15 075	15 998	-	-
25	-	13 906	14 414	14 940	15 517	16 181	16 967	17 910	-
30	-	15 390	15 892	16 381	16 893	17 463	18 125	18 915	19 867
40	-	18 804	19 332	19 790	20 211	20 631	21 086	21 609	22 236
45	-	-	21 335	21 796	22 191	22 557	22 927	23 337	23 821
50	-	-	-	24 029	24 412	24 736	25 035	25 344	25 699
55	-	-	-	-	26 893	27 188	27 429	27 651	27 889
60	-	-	-	-	-	-	-	30 277	30 412

Current consumption in A

20	-	27.80	29.14	30.29	31.32	32.28	33.25	-	-
25	-	26.36	27.51	28.47	29.31	30.08	30.87	31.71	-
30	-	26.28	27.27	28.07	28.75	29.38	30.00	30.70	31.53
40	-	29.41	30.18	30.76	31.23	31.64	32.06	32.55	33.17
45	-	-	32.94	33.47	33.87	34.22	34.59	35.02	35.59
50	-	-	-	36.81	37.19	37.52	37.85	38.26	38.81
55	-	-	-	-	40.99	41.32	41.66	42.08	42.64
60	-	-	-	-	-	-	-	46.28	46.88

Mass flow in kg/h

20	-	776	944	1 138	1 361	1 617	1 909	-	-
25	-	775	943	1 137	1 359	1 613	1 905	2 236	-
30	-	775	943	1 136	1 357	1 611	1 901	2 230	2 603
40	-	774	942	1 135	1 355	1 607	1 894	2 221	2 590
45	-	-	943	1 135	1 355	1 606	1 892	2 217	2 584
50	-	-	-	1 136	1 355	1 606	1 891	2 214	2 579
55	-	-	-	-	1 356	1 606	1 890	2 212	2 575
60	-	-	-	-	-	-	-	2 211	2 573

Coefficient of performance (C.O.P.)

20	-	3.66	4.26	4.93	5.66	6.43	7.20	-	-
25	-	3.11	3.67	4.29	4.99	5.73	6.51	7.30	-
30	-	2.67	3.17	3.74	4.38	5.09	5.84	6.62	7.41
40	-	1.98	2.37	2.83	3.35	3.94	4.59	5.29	6.05
45	-	-	2.05	2.44	2.90	3.42	4.01	4.66	5.37
50	-	-	-	2.10	2.50	2.96	3.48	4.06	4.71
55	-	-	-	-	2.13	2.53	2.98	3.50	4.08
60	-	-	-	-	-	-	-	2.99	3.50

Nominal performance at to = 7.2 °C, tc = 54.4 °C

Cooling capacity	88 841	W
Power input	27 228	W
Current consumption	41.35	A
Mass flow	2 027	kg/h
C.O.P.	3.26	

Pressure switch settings

Maximum HP switch setting	45	bar(g)
Minimum LP switch setting	1.5	bar(g)
LP pump down setting	2.3	bar(g)

Sound power data

Sound power level		dB(A)
With acoustic hood		dB(A)

to: Evaporating temperature at dew point

tc: Condensing temperature at dew point

Rating conditions : Superheat = 11.1 K, Subcooling = 8.3 K

Tolerance according EN12900

Danfoss can accept no responsibility for possible errors in catalogues, brochures and other printed material. Danfoss reserves the right to alter its products without notice. This also applies to products already on order provided that such alternations can be made without subsequential changes being necessary in specifications already agreed. All trademarks in this material are property of the respective companies. Danfoss and the Danfoss logotype are trademarks of Danfoss A/S. All rights reserved.

Performance data at 100 Hz, EN 12900 rating conditions

R410A

Cond. temp. in °C (tc)	Evaporating temperature in °C (to)							
	-20	-15	-10	-5	0	5	10	15

Cooling capacity in W

20	-	45 115	54 842	66 429	80 057	95 910	114 169	-	-
25	-	42 319	51 782	62 986	76 113	91 346	108 867	128 858	-
30	-	39 878	49 041	59 827	72 417	86 994	103 741	122 839	144 471
40	-	35 596	44 051	53 891	65 300	78 458	93 548	110 752	130 254
45	-	-	41 567	50 881	61 644	74 039	88 247	104 451	122 833
50	-	-	-	47 687	57 769	69 364	82 653	97 820	115 047
55	-	-	-	-	53 556	64 315	76 651	90 745	106 780
60	-	-	-	-	-	-	-	83 107	97 914

Power input in W

20	-	13 279	13 868	14 517	15 273	16 184	17 296	-	-
25	-	14 717	15 286	15 875	16 532	17 304	18 239	19 384	-
30	-	16 274	16 840	17 388	17 965	18 618	19 394	20 341	21 505
40	-	19 827	20 446	20 967	21 439	21 909	22 423	23 030	23 776
45	-	-	22 538	23 074	23 522	23 928	24 339	24 804	25 368
50	-	-	-	25 421	25 863	26 224	26 551	26 892	27 294
55	-	-	-	-	28 482	28 817	29 079	29 315	29 573
60	-	-	-	-	-	-	-	32 094	32 226

Current consumption in A

20	-	27.81	28.99	30.05	31.08	32.14	33.32	-	-
25	-	27.11	28.16	29.06	29.89	30.74	31.68	32.80	-
30	-	27.53	28.48	29.26	29.94	30.62	31.36	32.25	33.36
40	-	31.07	31.96	32.62	33.14	33.59	34.06	34.62	35.36
45	-	-	34.82	35.49	35.99	36.39	36.79	37.25	37.86
50	-	-	-	38.95	39.47	39.87	40.24	40.64	41.17
55	-	-	-	-	43.45	43.88	44.26	44.65	45.14
60	-	-	-	-	-	-	-	49.12	49.61

Mass flow in kg/h

20	-	819	999	1 205	1 443	1 715	2 027	-	-
25	-	818	997	1 203	1 439	1 710	2 020	2 372	-
30	-	817	996	1 201	1 437	1 706	2 014	2 364	2 760
40	-	816	995	1 200	1 434	1 702	2 007	2 353	2 744
45	-	-	996	1 201	1 435	1 702	2 005	2 350	2 739
50	-	-	-	1 203	1 436	1 702	2 005	2 348	2 735
55	-	-	-	-	1 439	1 704	2 006	2 348	2 734
60	-	-	-	-	-	-	-	2 349	2 733

Coefficient of performance (C.O.P.)

20	-	3.40	3.95	4.58	5.24	5.93	6.60	-	-
25	-	2.88	3.39	3.97	4.60	5.28	5.97	6.65	-
30	-	2.45	2.91	3.44	4.03	4.67	5.35	6.04	6.72
40	-	1.80	2.15	2.57	3.05	3.58	4.17	4.81	5.48
45	-	-	1.84	2.21	2.62	3.09	3.63	4.21	4.84
50	-	-	-	1.88	2.23	2.65	3.11	3.64	4.22
55	-	-	-	-	1.88	2.23	2.64	3.10	3.61
60	-	-	-	-	-	-	-	2.59	3.04

Nominal performance at to = 5 °C, tc = 50 °C

Cooling capacity	82 653	W
Power input	26 551	W
Current consumption	40.24	A
Mass flow	2 005	kg/h
C.O.P.	3.11	

Pressure switch settings

Maximum HP switch setting	45	bar(g)
Minimum LP switch setting	1.5	bar(g)
LP pump down setting	2.3	bar(g)

Sound power data

Sound power level	dB(A)
With acoustic hood	dB(A)

to: Evaporating temperature at dew point

tc: Condensing temperature at dew point

Rating conditions : Superheat = 10 K , Subcooling = 0 K

Tolerance according EN12900

Danfoss can accept no responsibility for possible errors in catalogues, brochures and other printed material. Danfoss reserves the right to alter its products without notice. This also applies to products already on order provided that such alternations can be made without subsequential changes being necessary in specifications already agreed. All trademarks in this material are property of the respective companies. Danfoss and the Danfoss logotype are trademarks of Danfoss A/S. All rights reserved.

Performance data at 100 Hz, ARI rating conditions
R410A

Cond. temp. in °C (tc)	Evaporating temperature in °C (to)							
	-20	-15	-10	-5	0	5	10	15

Cooling capacity in W

20	-	48 184	58 525	70 834	85 302	102 120	121 478	-	-
25	-	45 408	55 511	67 464	81 458	97 685	116 334	137 598	-
30	-	43 020	52 852	64 414	77 899	93 500	111 408	131 816	154 914
40	-	38 940	48 128	58 808	71 176	85 426	101 754	120 355	141 422
45	-	-	45 834	56 025	67 788	81 318	96 812	114 466	134 478
50	-	-	-	53 115	64 246	77 030	91 667	108 354	127 292
55	-	-	-	-	60 470	72 493	86 260	101 972	119 832
60	-	-	-	-	-	-	-	95 368	112 176

Power input in W

20	-	13 279	13 868	14 517	15 273	16 184	17 296	-	-
25	-	14 717	15 286	15 875	16 532	17 304	18 239	19 384	-
30	-	16 274	16 840	17 388	17 965	18 618	19 394	20 341	21 505
40	-	19 827	20 446	20 967	21 439	21 909	22 423	23 030	23 776
45	-	-	22 538	23 074	23 522	23 928	24 339	24 804	25 368
50	-	-	-	25 421	25 863	26 224	26 551	26 892	27 294
55	-	-	-	-	28 482	28 817	29 079	29 315	29 573
60	-	-	-	-	-	-	-	32 094	32 226

Current consumption in A

20	-	27.81	28.99	30.05	31.08	32.14	33.32	-	-
25	-	27.11	28.16	29.06	29.89	30.74	31.68	32.80	-
30	-	27.53	28.48	29.26	29.94	30.62	31.36	32.25	33.36
40	-	31.07	31.96	32.62	33.14	33.59	34.06	34.62	35.36
45	-	-	34.82	35.49	35.99	36.39	36.79	37.25	37.86
50	-	-	-	38.95	39.47	39.87	40.24	40.64	41.17
55	-	-	-	-	43.45	43.88	44.26	44.65	45.14
60	-	-	-	-	-	-	-	49.12	49.61

Mass flow in kg/h

20	-	815	993	1 198	1 434	1 704	2 013	-	-
25	-	813	991	1 195	1 430	1 699	2 006	2 355	-
30	-	812	990	1 194	1 427	1 695	2 000	2 347	2 739
40	-	811	989	1 193	1 425	1 691	1 993	2 336	2 723
45	-	-	990	1 193	1 426	1 690	1 991	2 333	2 718
50	-	-	-	1 195	1 427	1 691	1 991	2 331	2 715
55	-	-	-	-	1 430	1 693	1 992	2 331	2 713
60	-	-	-	-	-	-	-	2 332	2 713

Coefficient of performance (C.O.P.)

20	-	3.63	4.22	4.88	5.59	6.31	7.02	-	-
25	-	3.09	3.63	4.25	4.93	5.65	6.38	7.10	-
30	-	2.64	3.14	3.70	4.34	5.02	5.74	6.48	7.20
40	-	1.96	2.35	2.80	3.32	3.90	4.54	5.23	5.95
45	-	-	2.03	2.43	2.88	3.40	3.98	4.61	5.30
50	-	-	-	2.09	2.48	2.94	3.45	4.03	4.66
55	-	-	-	-	2.12	2.52	2.97	3.48	4.05
60	-	-	-	-	-	-	-	2.97	3.48

Nominal performance at to = 7.2 °C, tc = 54.4 °C

Cooling capacity	93 635	W
Power input	28 867	W
Current consumption	43.92	A
Mass flow	2 136	kg/h
C.O.P.	3.24	

Pressure switch settings

Maximum HP switch setting	45	bar(g)
Minimum LP switch setting	1.5	bar(g)
LP pump down setting	2.3	bar(g)

Sound power data

Sound power level	dB(A)
With acoustic hood	dB(A)

to: Evaporating temperature at dew point

tc: Condensing temperature at dew point

Rating conditions : Superheat = 11.1 K , Subcooling = 8.3 K

Tolerance according EN12900

Danfoss can accept no responsibility for possible errors in catalogues, brochures and other printed material. Danfoss reserves the right to alter its products without notice. This also applies to products already on order provided that such alternations can be made without subsequential changes being necessary in specifications already agreed. All trademarks in this material are property of the respective companies. Danfoss and the Danfoss logotype are trademarks of Danfoss A/S. All rights reserved.