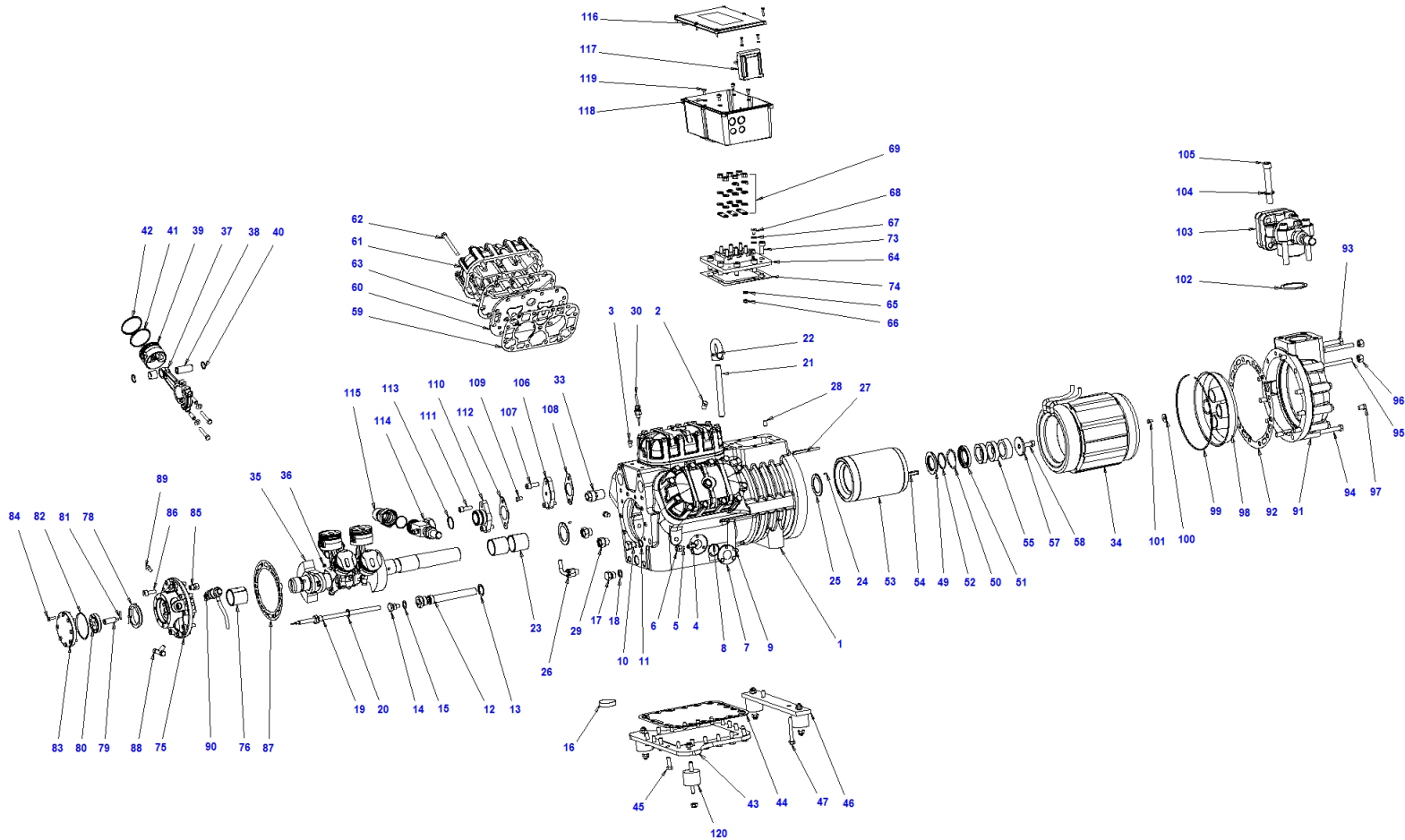


Z 25 106 Y



| Pos. | Code | Description | Quantity | Note | Notice: |
|------|------------|----------------------------------|----------|------|---------|
| 1 | S6351001AA | Compressor body | 1 | | |
| 2 | S6501130 | Plug 1/4 NPT | 3 | | |
| 3 | S1251130 | Plug 1/8 NPT | 1 | | |
| 4 | RA1001000 | Connection 90° 1/4 NPT - 1/4 SAE | 1 | | |
| 5 | G200002 | Copper nipple | 1 | | |
| 6 | G1800F026 | Filler 1/4 SAE | 1 | | |
| 7 | SOS1 | Oil sight glass | 2 | | |
| 8 | S3131OR | O-ring for oil sight glass | 2 | | |
| 9 | TE1006016 | Screw M6x16 UNI5739 | 6 | | |
| 10 | S8601130 | Plug 3/8 gas ISO 228/1 | 1 | | |
| 11 | S6501056 | 3/8 gas gasket | 1 | | |
| 12 | S4501047-A | Oil strainer | 1 | | |
| 13 | S8701056 | 3/4 gas gasket | 1 | | |
| 14 | S8601130 | Plug 3/8 gas ISO 228/1 | 1 | | |
| 15 | S6501056 | 3/8 gas gasket | 1 | | |
| 16 | W3501128 | Magnet | 1 | | |
| 17 | S1451130 | Plug 1/4" gas ISO 228/1 | 1 | | |
| 18 | S1351056 | Gasket | 1 | | |
| 19 | S4601351 | Sleeve for Crankase Heater | 1 | | |
| 20 | S6501056 | 3/8 gas gasket | 1 | | |

| Pos. | Code | Description | Quantity | Note | Notice: |
|------|------------|-----------------------------|----------|------|---------|
| 21 | RM1016160 | Screw | 1 | | |
| 22 | GO2016000 | Raising ring | 1 | | |
| 23 | S6501013-A | Main friction bearing | 2 | | |
| 24 | SE1004008 | Pin | 2 | | |
| 25 | S6501011 | Thrust collar | 2 | | |
| 26 | S860A070 | Oil return valve | 1 | | |
| 27 | S6301063 | Key 8x5x90 UNI 7510 | 1 | | |
| 28 | GR101016 | Stop dowel | 1 | | |
| 29 | S650A076 | Pressure regulatng valve | 2 | | |
| 30 | EC50D | Temperatur sensor diagnose | 1 | | |
| 31 | ML_Z | Nameplate | 1 | | |
| 32 | RI1025035 | Rivet | 2 | | |
| 33 | S6301156 | Safety relief valve | 1 | | |
| 34 | RS14A | Stator 230-400 / 3 / 50 DOL | 1 | | |
| 34 | RS14B | Stator 400 / 3 / 50 SDS | 1 | | |
| 34 | RS14CAMS | Stator 400 / 3 / 50 PWS | 1 | | |
| 35 | S6501002AA | Shaft | 1 | | |
| 36 | GR100810 | Stop dowel | 3 | | |
| 37 | S6501003AA | Connecting rod | 6 | | |
| 38 | S6301005 | Piston pin | 6 | | |

| Pos. | Code | Description | Quantity | Note | Notice: |
|------|------------|---------------------------|----------|------|---------|
| 39 | S6351004-A | Piston | 6 | | |
| 40 | S6301149 | Circlip | 12 | | |
| 41 | S6356001 | Oil scraper ring | 6 | | |
| 42 | S6355001 | Compression ring | 6 | | |
| 43 | S8601014 | Bottom plate | 1 | | |
| 44 | S8601015 | Gasket for bottom plate | 1 | | |
| 45 | TE1010030 | Screw M10x30 UNI5739 | 20 | | |
| 46 | S4501018AA | Thrusting plate | 1 | | |
| 47 | TE1010030 | Screw M10x30 UNI5739 | 2 | | |
| 49 | S6501078 | Shaft thrust bearing | 1 | | |
| 50 | ANLMKAS62 | Spring | 1 | | |
| 51 | S6501120 | Thrust collar | 1 | | |
| 52 | S3175OR | OR3175 | 1 | | |
| 53 | RR16S | Rotor | 1 | | |
| 54 | S4491063 | Key | 1 | | |
| 55 | S4501061 | Spacer for rotor | 2 | | |
| 57 | S4501045 | Washer | 1 | | |
| 58 | TE1012040 | Screw M12x40 UNI5739 | 1 | | |
| 59 | S6351031D | Gasket valve plate - body | 3 | | |
| 60 | S6351006LL | Valve plate | 3 | | |

| Pos. | Code | Description | Quantity | Note | Notice: |
|------|------------|--|----------|------|---------|
| 61 | S6501007HH | Head | 3 | | |
| 62 | TE1210090 | Screw M10x90 UNI5737 | 39 | | |
| 63 | S8701032 | Gasket valve plate - head | 3 | | |
| 64 | S8601040 | Terminal plate | 1 | | |
| 65 | RO1106012 | Washer 6.4x12x1.6 UNI 6592 | 6 | | |
| 66 | DE2206006 | Nut M6X1X6 DIN 980 | 6 | | |
| 67 | RO1106012 | Washer 6.4x12x1.6 UNI 6592 | 2 | | |
| 68 | TS4006008 | Screw M6x8 ISO 7045 | 1 | | |
| 69 | SK261310 | Staple bars connection kit - V/Z/W NEW | 1 | | |
| 73 | TC2710025 | Screw M10x25 UNI5931 | 8 | | |
| 74 | S4501043C | Connections plate gasket | 1 | | |
| 75 | S4951009AA | Flange | 1 | | |
| 76 | S6501012-A | Friction bearing flange side | 1 | | |
| 78 | S6301069 | Oil pump eccentric | 1 | | |
| 79 | S6501049 | Oil pump stud | 1 | | |
| 80 | S4951125 | Oil pump gear | 1 | | |
| 81 | S4951134 | Oil pump spring | 2 | | |
| 82 | S33000R | O-ring for oil pump cover | 1 | | |
| 83 | S6301067AA | Oil pump cover | 1 | | |
| 84 | TE1006020 | Screw M6x20 UNI5739 | 8 | | |

| Pos. | Code | Description | Quantity | Note | Notice: |
|------|------------|--|----------|------|-----------------------------|
| 85 | S4951044 | Oil pump safety valve | 1 | | |
| 86 | TC2410030 | Screw M10x30 UNI5931 | 10 | | |
| 87 | S6501033C | Flange gasket | 1 | | |
| 88 | RA2001030 | Connection a T 1/8 NPT-1/4 Sae-1/4 Shrader | 1 | | |
| 89 | S1251130 | Plug 1/8 NPT | 1 | | |
| 90 | EC1630DRIC | DIFF. PR. SWITCH KIT INT250 | 1 | | use EC1620RIC with DELTA P2 |
| 91 | S6301010AA | Suction flange | 1 | | |
| 92 | S6501034C | Suction flange - body gasket | 1 | | |
| 93 | TE1212140 | Screw M12x140 UNI5737 | 2 | | |
| 94 | TE1212110 | Screw M12x110 UNI5737 | 8 | | |
| 95 | S6301153 | Screw M12 L=105 | 2 | | |
| 96 | DE1112012 | Nut M12x1,75x12 UNI 5587 | 2 | | |
| 97 | S6501130 | Plug 1/4 NPT | 2 | | |
| 98 | S6501038-A | Suction strainer | 1 | | |
| 99 | AN2023000 | Ring | 1 | | |
| 100 | RO1006024 | Washer M6x24 UNI 6593 | 1 | | |
| 101 | TE1006012 | Screw M6x12 UNI5739 | 1 | | |
| 102 | S6301055B | Valve gasket | 1 | | |
| 103 | VGS080078 | Valve | 1 | | |
| 104 | RO1016030 | Washer M16x30 UNI 6592 | 4 | | |

| Pos. | Code | Description | Quantity | Note | Notice: |
|------|------------|-------------------------------|----------|------|-------------------------------|
| 105 | TC2216110 | Screw M16x110 UNI5931 | 4 | | |
| 106 | S4501060-A | Discharge flange | 1 | | |
| 107 | TC2410030 | Screw M10x30 UNI5931 | 2 | | |
| 108 | S4501058D | Valve gasket | 1 | | |
| 109 | S1251130 | Plug 1/8 NPT | 1 | | |
| 110 | S6401060 | Discharge flange | 1 | | |
| 111 | TC2410030 | Screw M10x30 UNI5931 | 2 | | |
| 112 | S4501058D | Valve gasket | 1 | | |
| 113 | V0001559 | Teflon gasket | 2 | | |
| 114 | VRR060000 | Rotalock valve | 1 | | |
| 115 | CRS060035 | Rotalock port | 1 | | |
| 116 | S8601039 | Terminal box | 1 | | |
| 117 | ECA11D | INT69 TML diagnose module kit | 1 | | use ECA11D-UPG with INT 69 TM |
| 118 | RO2006011 | Washer 6x10 UNI 1751A | 4 | | |
| 119 | TS4006012 | Screw M6x12 ISO 7045 | 4 | | |
| 120 | SK205060 | Rubber vibration absorber kit | 1 | | |
| | S635A004 | Piston kit | 1 | | |
| | SK103711 | Discharge valve kit | 1 | | |
| | SK103800 | Suction valve kit | 1 | | |
| | SK132500 | Connecting rod/piston kit | 6 | | |

| Pos. | Code | Description | Quantity | Note | Notice: |
|------|----------|--|----------|------|---------|
| | SK140400 | Friction bearing kit | 1 | | |
| | SK170100 | Oil sight glass kit | 2 | | |
| | SK182100 | 3 ph terminal box kit | 1 | | |
| | SK190100 | Oil strainer kit | 1 | | |
| | SK210000 | Oil pump kit | 1 | | |
| | SK231811 | Complete electric motor - 230-400 / 3 / 50 DOL | 1 | | |
| | SK231812 | Complete electric motor - 400 / 3 / 50 SDS | 1 | | |
| | SK231813 | Complete electric motor - 400 / 3 / 50 PWS | 1 | | |
| | SK2400 | Gasket kit | 1 | | |
| | SK261310 | Staple bars connection kit - V/Z/W NEW | 1 | | |
| | SK49502 | Valve plate kit | 3 | | |
| | SK890000 | Kit thrust collar and spring V - Z | 1 | | |